

# **Scorched Earth and Chemtrails**

## ***Signs of Incoming Changes***

**Lom O'Shapo**

Written between August 2010 and April 2012  
Completed and Released on Earth Day 2012

---

*.... The past was dead, the future was unimaginable. What certainty had he that a single human creature now living was on his side? And what way of knowing that the dominion of the Party would not endure for ever? Like an answer, the three slogans on the white face of the Ministry of Truth came back to him:*

WAR IS PEACE  
FREEDOM IS SLAVERY  
IGNORANCE IS STRENGTH

***from George Orwell's "1984"***

---

TABLE OF CONTENTS	PAGES
Scorched Earth and Chemtrails Investigative Report	2 - 23
About the Author	24
Mektoob (i.e. Destiny)	25
Two Suns/Moons Disinformation "News" Stories	26
Opinion-Editorial Pages	27 - 28
Appendix	29 - 38

There is a massive and continuous high altitude spraying operation conducted all over earth. Even though it is conducted in the open under our nose, this chemical spraying is more classified than the Manhattan project. The generated artificial clouds mitigate global warming effects by reducing the incoming sun radiation by over 25%. That mitigation level is 5 to 10 times higher than is officially required and yet sun light is so powerful that it damages vegetation and hastens Spring and Autumn by 2 to 4 months.

The terrifying reason for both the chemical spraying and the strange weather behavior is revealed. Everything can be verified by using simple and easy to follow common sense research and investigative techniques.

## **SUMMER FALL COLORS - AUTUMN IN SUMMER**

I started writing this report in August 2010 when Fall colors seemed to be 3 to 4 months ahead of schedule for many tree species in the San Francisco Bay Area. A large number of trees were severely stressed and their leaves fell off. This phenomenon is unprecedented and yet no one is talking about it. I witnessed the same Spring 2010 phenomena in other West Coast regions: tree damage in Spokane, WA and Moscow, ID in June, and in Phoenix, AZ in July. Why is everyone quiet about the Spring 2010 tree damages? Are Fall colors in Spring a state secret? Are people blissfully blind and ignorant? This news seems to be classified even though damaged trees are clearly visible in unrelated TV news and Hollywood film scenes.

### **Local News (see appendix for excerpts)**

A few local news (but no national news organization) have reported similar events. Examples:

- WREG-TV had an segment on titled "**Mystery Crop Damage Threatens Hundreds of Acres**" by Shaun Chaiyabhat, on June 1, 2010. The filmed scenes clearly show burn like damage on many different plant species. The author said that the events happened on the weekend before June 1, 2010.
- An interesting newspaper article was published on Tuesday September 7, 2010 in The News-Enterprise, (thenewsenterprise.com): "Ky. farmer claims some corn popped on the stalk" Elizabethtown, Ky. – A Hardin County farmer said that some ears among his feed corn rows popped on the stalk in a phenomenon that agricultural experts believe is associated with irregular rainfall and high heat.....

## **IMPACTED TREE SPECIES - A FEW OBSERVED EXAMPLES**

The southern and Northern California Coast Mediterranean climate is very favorable to most trees. As the San Francisco Bay Area is a cultural and ethnic melting pot, trees from all around the world have been planted here. According to Canopy Tree, a tree organization in Palo Alto, there are at least 384 different tree species within the city of Palo Alto. The plant diversity in this area yielded a large number of impacted tree species.

### **Immediate Damage**

Trees that exhibited damage on the first week of June include (this is a very short list):

- One type of Eucalyptus
- Jacarandas
- American Sycamore (aka London Plane)

Most leaves of Eucalyptus and Jacarandas became blackened and fell off. The damaged Eucalyptus trees that I first noticed on the first week of June are located on Highway 280 between Sand Hill Road and Highway 92.

The Jacarandas were located in the San Antonio shopping center in Mountain View.

### **American Sycamores**

American sycamores had from 5% to 95% of the leaves turn color and fall off. Fallen leaves did not keep their shape but crumbled into balls. The trees that had most of their leaves fallen off grew new fresh leaves in July and by mid-October have green leaves, they went through a second spring in September! While the trees with only 5 to 10 % of their leaves down had very dry and brown leaves by the end of September. These trees went through Fall two months early!

### **Southern Magnolia (Magnolia Grandiflora)**

The Southern Magnolia is a large striking **evergreen tree** with large dark green leaves and large white fragrant flowers. These trees are popular in many Bay Areas towns. Damage varied from severe to light. The light damage meant that many leaves became brown and some fell down.

### **Redwood Trees and Pine Trees**

Redwood trees showed various distress signs. Some lost almost all their pines. Many small (young) trees lost all their needles. Some tall tree foliage had thinned considerably, most of the lost needles were from the top. A

small number of Redwood trees dried completely. A couple of pine tree species showed a lot of damage. Some had all the needles fallen off on the side that received the most sun exposure.



### **Vines, Bushes, and Hedges**

Ice Plants that received a lot of sun exposure turned black, dried out and turned ash grey. Ice plants that are used to hot places such as Mediterranean beaches could not deal with the intense sun radiation.

Even well watered English Ivy that received full sun exposure had almost completely turned brown during the summer while the plants growing in the shade were fine. In October 2010 damaged Ivy plants produced healthy new vines and leaves over the dead ones.

Many other bush species planted along roads were blackened by the sun during the month of June.

### **Delayed Damage**

A large number of trees, such as Maple trees, had delayed damage. The sun induced injuries did not show up until 2 to 3 months after the end of May. These trees started turning color in mid-August through mid-September depending on the affected species. San Francisco bay Area fall colors have never started in September, the typical peak fall color time is the end of November through mid December.

### **Sun Exposure –The case of the Purple Leaf Plum Trees on Central Expressway**

Many trees showed more damaged leaves where they received the most sun exposure. For example there is a row of Purple Leaf Plum trees planted along a particular Central Expressway spot in Sunnyvale, CA. These trees are planted in a straight row with tall evergreen bushes in between. The corner Purple tree received the most sun exposure and had the most damage (the most number of branches with no leaves in the month of August). Three stand alone Purple Leaf trees with full sun exposure were located a short distance away; they lost almost all their leaves except for a handful on the lower branches.

## **VEGETATION AND TREE DAMAGES IN OTHER WEST COAST AREAS**

**Southern California (Los Angeles and San Diego, June through September 2010).** Many TV news shows had in the background sun scorched trees. Example: a CBS 60 minutes segment on homeless veteran filmed in June in San Diego, showed trees with highly reduced foliage. Many other Los Angeles and San Diego news segment have shown similar tree damages.

**Moscow, Idaho.** In Moscow, Idaho, American Sycamore trees lost most of their leaves at the end of June 2010.

**Phoenix, Arizona (Mid July).** In Phoenix, Arizona, one non-native tree species had all its leaves dried out but still on the trees.

**South of the Border (Mexico).** Several times, in the months of August and September, TV news clearly showed severe tree damage in the city of Ciudad Juárez (in Mexico, south of the US border)

## **NO MORE GOLDEN HILLS IN CALIFORNIA**

Grass and similar vegetation used to turn a golden yellow during the summer and kept that gorgeous color until rains starts in November or so. In 2008 and 2009 the grass color became a dirty brown or gray by the 2nd week of September. In 2010 the dry vegetation color turned a dirty brown well before August.

## VEGETATION DAMAGES IN OTHER USA REGIONS

During summer 2010 (July through Sept.2010) vegetation damage was evident in many areas of the USA and the world.

Here is a very short USA list:

- Minnesota (9/25) trees with Autumn foliage
- White House (9/11/2010): TV News of Obama speech with background trees with Fall colors.
- Many more cases can be dug up by looking at TV archives. For instance this snapshot of WBZ-TV (Boston) on August 25 clearly shows Fall tree colors two months too early, peak Fall color is in late October.
- There are too many other cases to list. Many TV stations keep archival recordings that can be accessed by anyone.



## POSSIBLE VEGETATION DAMAGES IN OTHER COUNTRIES

Glimpses of early (Summer time) Fall color and trees without leaves have been apparent in TV News background or other shows, such as TV travel shows. The recordings in foreign countries that I witnessed through TV were from the period of May through September 2010 (observations must be checked by natives).

**Paris, France.** One tree species lost all its leaves, many stressed trees, trees with Fall colors in Summer.

**Germany.** Ditto. (Fall colors in Summer in TV news background)

**Israel.** At least 2 different shows showed extensive tree foliage damage.

## SENSITIVE CHINESE AS SUN RADIATION SENSOR

Our skin is a very sensitive heat and radiation sensor. Some people (especially fair complexion Chinese) skin are more so. A typical example: I saw a hatless Chinese couple who covered their heads with the man jacket to shade themselves from the intense sun radiation.

Skin nerves are sending a signal to the brain: It is too hot, we are burning, do something.

## WHEN DID THE 2010 ACUTE DAMAGE START?

The initial USA West Coast damage happened at the end of May, specifically on May 26, 27, and 28 (Wednesday through Friday). Some trees have been immediately hurt; most have aged 3 months within 3 days. Sun irradiance (or insolation) reached impossibly high levels during these 3 days.

### Insolation

Insolation is a measure of how much solar light energy (irradiance) reaches the ground. The name comes from **INCident SOLAR radiaTION**. It is expressed in watts per square meter ( $W/m^2$ ). The average solar radiation arriving at the top of the Earth's atmosphere is 1,366 watts per square meter. The Sun ray energy decreases as light passes through the atmosphere. The peak insolation is about  $1,000 W/m^2$  for a surface perpendicular to the Sun rays at sea level on a clear day in the middle of summer (around June 22). The value varies with the Sun angle at different times of year, and depends on the amount of atmospheric haze and cloud cover.

**Solar light irradiance value in outer space depends on the distance to the sun.** It decreases inversely proportional to the square of the distance to the sun. This is a Physics inverse-square law.

Venus Irradiance = 2600 (closer to the sun)

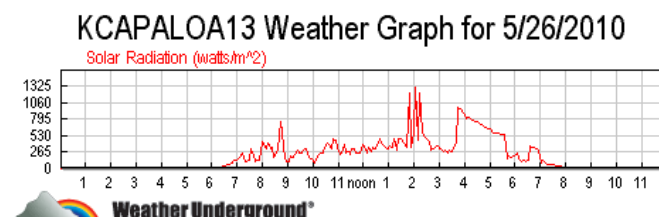
Earth Irradiance = 1366 (right before light enters earth atmosphere)

Mars Irradiance = 700 (Farther from the sun)

The higher the Irradiance value, the closer a planet is to the Sun. **This is a basic Law of Physics.**

### May 26, 2010, Palo Alto, California – Extreme Insolation, Day 1

The May 26 weather was overcast and mostly cloudy in the morning. It started clearing in the afternoon. The sky became very blue. That dark blue color was the norm many years ago, but is rare now. It can be observed only when a storm is brewing or just passed (storms clean the sky). Most of the time “clear” skies are a whitish blue. The artificial haze that makes the sky a whitish blue was





gone on that day and the ground irradiance exceeded 1300. That is one scary number.

### May 27, 2010, Palo Alto, California - Extreme Insolation, Day 2

On 5/27, the sky was as blue as it used to be. There were fluffy white clouds that contrasted with the true blue sky. The Insolation reached a peak value of 1339!

### May 28, 2010, Palo Alto, California - Extreme Insolation, Day 3

On May 28, an extraordinary thing happened. During the morning, there were fluffy clouds in a beautifully rare blue sky. Then between 11:00 am and noon, a curtain of whitish blue sky started moving in from the North West (Pacific Ocean direction) and replaced the true blue sky. It did look as if a curtain was pulled in and covered the truly blue sky. The insolation was 1,050 at 10:00 am and dropped to 1,000 at 1:00 pm. The local noon is around 1:00 pm and should have had a peak value as there were no apparent clouds in the sky.

### May 31, 2010, Palo Alto, California

A fleet of flying tankers sprayed chemicals in the San Francisco Bay Area. The chemtrails generated artificial clouds that covered the whole sky and produced this Insolation curve. The four graphs above can be compared to the supposedly clear blue sky of June 22 which should have been the annual peak. It does show a "normal" maximum value of 1000, the sky seemed clear but was whitish.

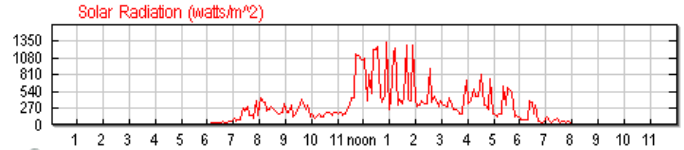
### June 22, 2010, Palo Alto, CA "Normal" peak

Weather station insolation sensor measurements can be inaccurate or even wrong, but no one can claim that trees were wrong or incorrect. **Trees do not lie.** Trees confirmed the presented insolation measurements.

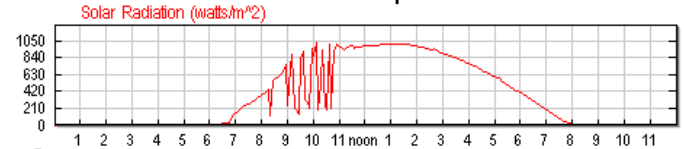
*(These Weather Graphs are permitted under*

*Wunderground.com terms and conditions of use: "PERMITTED USE. You may use the Site and the features, information, pictures and other data contained therein (collectively, the "Data") only for personal, non-commercial purposes. You may access, view and make copies of the Data in the Site for your personal, non-commercial use and will not publish or otherwise distribute the Data for any other purpose..."*)

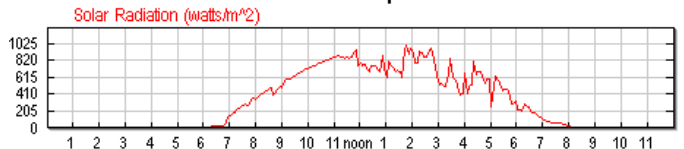
KCAPALOA13 Weather Graph for 5/27/2010



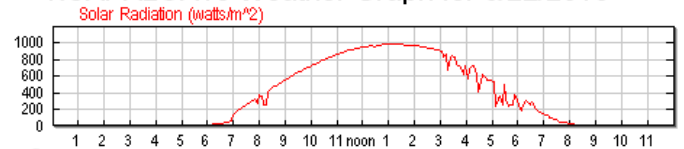
Weather Underground®  
KCAPALOA13 Weather Graph for 5/28/2010



KCAPALOA13 Weather Graph for 5/31/2010



KCAPALOA13 Weather Graph for 6/22/2010



### TREES AS FUSES AND AS MINE CANARIES

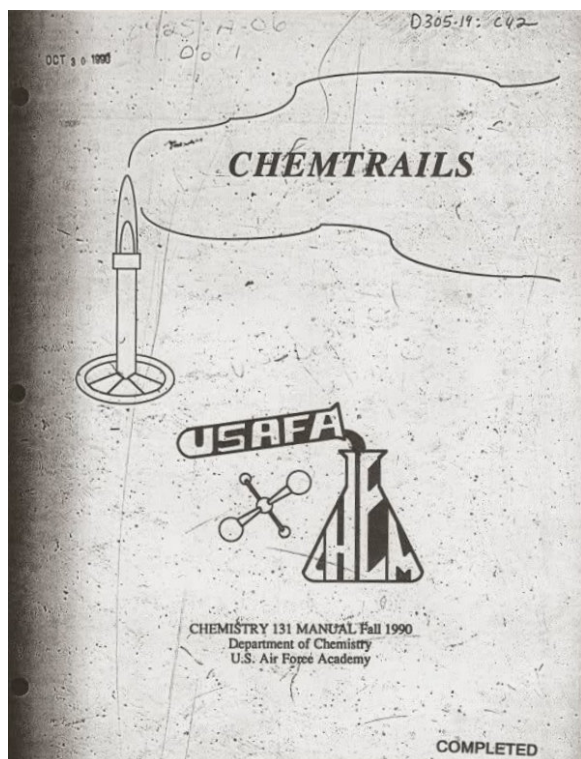
Trees acted as fuses and solar radiation sensors. They told us that something destructive was happening. Fuses blow up when operating conditions exceed safe values. Sun radiation has exceeded its normal and safe value. Trees are like canaries in coal mines. Early coal mines did not have safety features. Miners took caged canaries as early warning systems. Canaries are sensitive to deadly gases. As long as the birds kept singing, the air supply was safe. Dead birds meant immediate evacuation or death to miners.

### CHEMTRAILS AND THE HEAVENLY AS-S

It is very easy to spot air tankers spraying Artificial Sun-Shield chemicals (AS-S) in the sky. It is probably the biggest classified thing since the Manhattan project. It is carried out in the open right under (actually over) our noses. Most people are blissfully unaware of it as they cannot see farther than their noses. Many people have witnessed and documented plane spraying chemicals in the sky. The fake contrails are called Chemtrails.

### THE US AIR FORCE COINED "CHEMTRAILS" BY 1990 - NO KIDDING!!

The US Air force Academy offered a 1990 manual entitled "Chemtrails" for the Chemistry 131 course. Chemistry 131 manual can be obtained in microfiche format in Canadian, Australian, and American libraries. A good researcher with the handle name stompk put copies of 4 pages in David Icke's Forums (<http://forum.davidicke.com/showthread.php?t=91803>)



CHEMTRAILS	
Table of Contents	
Subject	Page
Chemistry 131	1
General Policies and Procedures	3
Collaboration Policy	9
Syllabus	10
Calendar	14
Laboratories and Handouts	
Inorganic Nomenclature	15
Scientific Method Laboratory (75 pts)	22
Data Analysis Laboratory (75 pts)	30
Emission Spectroscopy Laboratory (100 pts)	39
Calorimetry Laboratory (75 pts)	51
Energy Simulator Handout	64
Molecular Geometry and Electronic Structure Laboratory (75 pts)	75
Solutions Laboratory (75 pts)	86
Acid Rain Laboratory (75 pts)	97
Spectrometric Determination of $K_c$ Laboratory (100 pts)	111
Acid Base Titration Laboratory (75 pts)	123
Photography Laboratory (75 pts)	132
Qualitative Analysis Laboratory (100 pts)	145
Chemical Kinetics Laboratory (75 pts)	154
Electrochemistry Laboratory (75 pts)	167
Organic Laboratory (75 pts)	191

The manual "Chemistry 131" was offered by Amazon.com but is currently out of print"

amazon.com Hello. Sign in to get personalized recommendations. New customer? Start here.

Your Amazon.com | Today's Deals | Gifts & Wish Lists | Gift Cards

Shop All Departments Search Books

Books Advanced Search Browse Subjects New Releases Best Sellers The New York Times® Best Sellers

Chemtrails, Chemistry 131 manual, fall 1991  
: course policies and laboratory manual  
(SuDoc D 305.19:C 42/2) [Unknown Binding]  
U.S. Dept of Defense (Author)  
Be the first to review this item | Like (0)

No image available  
Share your own customer image

Out of Print--Limited Availability.

## US CONGRESS HAD A 2001 ACT ON "CHEMTRAILS" WEAPONS - THIS IS NO JOKE!!

United States Congressman Dennis Kucinich introduced legislation called Space Preservation Act of 2001. The complete bill is listed in the Appendix and at this government web site link: <http://thomas.loc.gov/cgi-bin/query/z?c107:H.R.2977.IH>. The following is an excerpt:

- (B) Such terms include exotic weapons systems such as--
- (i) electronic, psychotronic, or information weapons;
  - (ii) **chemtrails**;
  - (iii) high altitude ultra low frequency weapons systems;
  - (iv) plasma, electromagnetic, sonic, or ultrasonic weapons;
  - (v) laser weapons systems;
  - (vi) strategic, theater, tactical, or extraterrestrial weapons; and
  - (vii) chemical, biological, environmental, climate, or tectonic weapons.

## AS-S LOW COST AND EASE OF IMPLEMENTATION

At an October 2010 U.N. Convention on Biological Diversity conference in Japan, David Keith (head of the University of Calgary's Energy and Environmental Systems Group) stated that: "It takes so little material to alter the whole planet's climate. The costs of doing it are just absurdly cheap."

## SPOTTING AN AS-S SPRAYING PLANE

Air tankers spraying chemicals in the sky are easy to spot. The things to look for are:

### **Wrong Cruising Altitude**

Commercial jet planes such as Boeing 747 and 767 cruise at 43,000 to 45,000ft altitude. AS-S planes spray at 25,000 to 35,000 feet.

### **Hearing engines noise even with background noise**

This is another indication that these are not modern passenger jets flying at a normal cruising altitude.

### **Too Many Planes in one Sky Sector**

That is not a coincidence especially since all these planes are spraying chemical plumes.

### **Non-Symmetric "Contrails"**

**Some planes emit three non-symmetric Chemtrails**, the middle one is not in the center.

A PhD in Engineering or Physics is not required to know that no true contrails behave that way. The non-symmetry is used to mix two chemicals first, then the newly created compound reacts with the third plume to create the final chemical product. Other planes have 4 contrails, with 3 of the contrails quickly becoming one plume - this is a non-symmetric behavior and is also against Fluid Mechanics laws. Some planes spew out 2 plumes with one becoming wide and the other staying very thin. This is possible only if the chemical composition of the plumes is different. True contrails are made of the same chemicals, mostly water vapor, so they behave in exactly the same way because they are made of the same chemicals.

### **No regular schedule**

AS-S planes have no published regular schedules. Commercial jets have schedules. If a plane flies over one spot at a given time on a Tuesday, it would have done so on the previous one and will do so on the next one.

### **Flying Close to Each Other in 3-plane formation**

Real commercial jet Pilots are forbidden to do this. This technique is used to mix three chemicals one after the other. This approach is not used heavily anymore over populated region.

### **New Mathematics: $2 + 2 = 3$**

Some AS-S planes have 4 engines (2 on each wings) and 3 non-symmetric "contrails"

### **Planes with different "contrail" lengths**

Planes with different fake contrail lengths can be seen at the same time. If the sky conditions and exhaust fumes are similar, the lengths must be equal unless the "contrails" are made of different chemicals.

### **Some planes have "contrails" others don't**

This happens when there is at least one commercial jet in the sky when AS-S planes are spraying or when one of the AS-S planes is not spraying.

### **Making a big U-turn.**

Sometimes, AS-S planes fly in on direction, do a 180 degree U-turn and leave a circular Chemtrail trace.

### **On and Off "Contrails"**

### **Black soot plumes (Pilot, follow that black line in the sky)**

NOAA propagandist liars, explain this one. They actually did! they called them contrail shadows! Damn, these propagandists AS-S Hole fillers are really good or think that most humans are stupid. My wife and I were flying from Italy to London. She looked through a window and told me: "A plane below us is burning". I looked and saw a large multi-engine plane flying between our jet (which was at 45,000ft) and the top of the cloud cover. It was spouting one single charcoal black plume. I told my wife that we witnessed similar things in California: we saw planes following black lines in the sky and spraying two white Chemtrails" That was another example of mixing three chemicals above and under our noses.

### **Chemtrails Combining to form a whole visible sky cloud cover**

This happens after a fleet of AS-S air tankers spray in a large area.

### **Long-lasting "Contrails" and Government Propaganda**

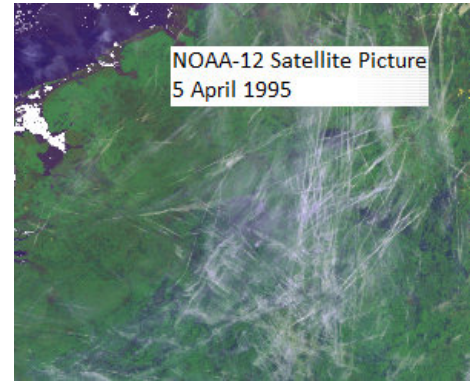
It is rare for contrails to last seconds, let alone minutes. All of a sudden contrails last routinely for hours even when the air is dry. Contrails are long lasting only when air is humid and contrails are at a low altitude. Air temperature at 40,000 ft is -56°C (-69°F). At such low temperature contrails last only a few seconds. This law of physics is actually explained in the middle of a NOAA propaganda web site: *"A drier atmosphere leads*



to a more short-lived contrail, while an atmosphere that has more humidity will lead to longer-lived contrails. However, if the atmosphere is too dry, no contrails will form." That is true. Propagandists do not always lie.

**Do not believe government propaganda pieces** such as this NOAA garbage: [www.wrh.noaa.gov/fgz/science/contrail.php?wfo=fgz](http://www.wrh.noaa.gov/fgz/science/contrail.php?wfo=fgz).

Joseph Goebbels would approve of it. To confuse us, NOAA says on that web page: "Many reports exist from World War II of situations where the accumulations of contrails was so extensive.." With the exception of a very few high flying planes such as B-29, World War II planes flew at a much lower altitude than today planes. NOAA is comparing oranges and apples. Another excerpt from that NOAA page: "Contrails can be found over most of the planet. Now that jet plane traffic, both civilian and military, can be at anyplace over the globe at anytime, contrails are becoming more and more common. This picture was taken by the NOAA-12 satellite as it passed over portions of Europe in 1995. It is very obvious from this color enhanced satellite image that the atmosphere was very conducive to the development of contrails on this date (5 April 1995) and that these contrails were long-lived enough to accumulate with many criss-cross patterns over the same heavily traveled portion of air space."



That is a classic propaganda half-truth, lie and deception technique plus an appeal to authority. NOAA said that the statements are true because they said so. They have no valid scientific or historical facts that support these blatant lies. What? There was no jet plane traffic in the 1970's. Why were very long lasting contrails extremely rare if non-existent then? Did NOAA know that Boeing 747's flew in the 1970's? Do they think no one remembers the 1970's and 1980's blue skies?

**The Truth is:** Chemtrails have been seen as early as 1990. Governments had geo-engineering global warning mitigation proposals by artificial cloud creation dating from before 1990 and had years to develop and test many approaches. The NOAA-12 picture probably depicts a Chemtrail test run. A Chicago movie line: "who are you going to believe, your lying eyes or what I am telling you" describes this disinformation technique.

Another classic propaganda trick is to repeat a lie until it is accepted as the truth. The US Air Force, NOAA, and NASA (and other agencies and copycat web sites) are using the same tired World War II bomber pictures with contrails, the same wording, the same statement to turn lies into truths. Four agencies: (EPA is the author, the other cosigned) got together and published in September 2000 a convenient "Aircraft Contrails Fact sheet" propaganda pamphlet. Several Chemtrails pictures were explained away as completely normal.



On the right is a World War II picture presented as a government argument that Chemtrails do not exist in 2010.

**That is not a scientific proof. That is disinformation.**



**Other type of propaganda:** Once in a while, there is a news article about conducting future geo-engineering work (as if it is not being done). Some of these articles could be the work of naive university researchers who do not get out very much. An example was in a KQED news titled: "**Cool The Earth With Geoengineering? Some Say Wait**" by Amy Standen. Date: November 5, 2010. An excerpt is in the Appendix.

## CHEMTRAIL PARTICIPANTS AND SILENT WITNESSES

NASA is only one of many participants who are involved in fogging the skies and lying to us. "NASA propagandist liars" label includes not only NASA but also NOAA, US Air Force, other US military and intelligence agencies, the White House, the Kremlin, 10 Downing, and the foreign equivalent such as the European Space Agency, Russian Federal Space Agency, major country (China, France, UK, Japan, Russia, Germany, India,...) Air forces, weather services, etc... Geo-engineering program via chemtrail production has been and is being carried out all over the world. A giant AS-S (Artificial Sun-Shield) covers the whole planet. That giant AS-S is visible for those of us who have eyes and brains. I'll teach you how to see it.



## NASA PSY OPS AGAINST THE WORLD CHILDREN

NASA propaganda is more disgusting than that of the Iranian mullahs who coerced 6 year old girls to march and chant "Death to Omrika". NASA is spearheading a propaganda campaign (disguised as a service to science) against children. NASA is lying to the world children by claiming that chemtrails are normal "contrails" and that artificial clouds are natural clouds. NASA is using tricks from Hitler and Stalin playbooks. Hitler said: *"Let me control the textbooks and I will control the state."* Stalin claimed that: *"Education is a weapon, whose effect depends on who holds it in his hands and at whom it is aimed."* That is how low NASA gets.

There are three repulsive NASA web page examples in the Appendix. In one of these NASA anti-children Psy OPs website, there is a picture of Chemtrails that NASA calls normal contrails and they claim that: *"most studies indicate that contrails have a net warming effect on our planet"*. This is the type of crap that NASA pulls straight out of its AS-S.

A NASA program is called S'COOL. NASA S'COOL pamphlet claims:

*Title: Engaging students in authentic science*

*Sub-title: Unique Educational Contributions - Societal Benefits*

*"The S'COOL program provides a simple and effective means for educators to bring authentic science into their teaching practice. Observations require no expensive equipment or extensive training, yet make a meaningful contribution to our understanding of the planet and the role that clouds play in our climate. Since 1997, S'COOL has directly impacted more than 25,000 students and 1,800 teachers in all 50 states and more than 46 countries around the world. S'COOL provides teachers peer reviewed Earth Science educational materials, with current science content. Students are highly motivated to provide observations for NASA. S'COOL data, available on the Internet, enable open-ended inquiry regarding the effects of clouds on weather and climate."* (S'COOL: <http://scool.larc.nasa.gov> - email: [scool@lists.nasa.gov](mailto:scool@lists.nasa.gov). Document: LG-2005-05-0013-LaRC)

It should be said that the vast majority of NASA employees are hard working trusty people. Only top managers are considered to be propagandists. For instance: on March 28, 2012, 49 prominent former NASA employees have written an open letter stating that NASA is lying about the true causes of global warning. See the last Appendix entry for more details.



Disgusting NASA Propaganda against the world children



"This program provides the skills that they will need for a very long time to be successful. The students who have been active have learned valuable information and problem solving skills that they will be able to use forever."

## SILENT PROFESSIONAL WITNESSES

Professional non-participant witnesses who are aware of the Chemtrail program but are silent include among others: commercial airline pilots, weather prediction professionals, and radar operators.

## REPORTERS ARE AWOL

No news agency anywhere in the world will dare report truthfully on Chemtrails. Even though reporters are AWOL many news media accidentally produced and documented a trove of chemtrail proofs. For instance the 2009, 2010 and 2011 televised Rose Bowl parades have chemtrails in the background while older televised show (well before 2000) have clear crisp true blue skies.

## NASTY CHEMICALS

The chemicals sprayed above us are probably detrimental to our health. Toxic chemical damages are worse on the most sensitive and fragile people (babies, pregnant mothers, the old and the sick)

### Chemistry in the Sky

There are at least two different types of Artificial Sun-Shields (AS-S). Each AS-S is created by mixing different (typically 3) chemical compounds that may chemically react with each other, with moisture (water vapor) and possibly with air.

**Type 1: Total or Complete AS-S**. This Sun-Shield is called a Total Shield because it totally and completely covers the sky and turns it into a whitish blue color. It is invisible to all except to people who know how to use their eyesight, their memory, and have a high school level understanding of optical physics.

**Type 2: AS-S Hole Patch**. AS-S holes happen ahead and behind storms. Storms clean the AS-S out of the sky.

Chemtrail patches are sprayed to close up Total AS-S holes. These Chemtrails are the ones most people are familiar with. They tend to last for hours and cover the whole sky with thick or whimsy white clouds. As a storm approaches a region, a fleet of planes scrambles and criss-cross the sky ahead of and behind the storm and sprays heavily. A chemtrail patch plugs the AS-S hole.

### What Sprayed up Must Come Down

What sprayed up comes down and get into our lungs and our bloodstream. Chemtrail chemicals and particles drift downward naturally. They rain down on us when there is light rain, or an atmospheric inversion. These chemicals are water soluble and can be easily collected on top of cars after the condensed water evaporates and leaves powdered residues. There are four or more different residue types that can be seen all over car surfaces, on garden furniture, and on many other surface:

- Very fine dark gray powder (like ash, soot, or very fine volcanic ash particles)
- White globules (the size of a small seed)
- Greenish powder
- Yellowish powder

A characteristic of these substances is that they cover all surfaces (top, sides, hidden places) evenly. They are residues of evaporated condensed water. They are not pollen (pollen is not water soluble). They are not mud splatter (mud does not splatter evenly). They come from the sky.

### Side Effect of Chemtrails Particulates.

Chemtrails particulates that rains down everywhere on earth produce a side effect that greatly accelerate the arctic ice melting. This conclusion is supported by NASA. According to a NASA publication as reported by the Associated Press on December 1, 2011 "**Arctic is a hotter, darker place since 2006, melting and absorbing heat more:**" *What's even more troubling to scientists is that there's been a record darkening of the normally white Arctic land and sea. White snow and ice reflects solar energy, but a melting darker Arctic in the summer absorbs that heat.*" NASA said that! NASA does not always lie. Some of its results are actually true.

The chemtrail soot like particulates that fall down on the arctic ice are **darker** than white snow. They decrease the ice albedo, more heat is absorbed, the arctic ice melting accelerates. See Appendix for more details.

### AUTISM

The first study linking measles, mumps, and rubella (MMR) vaccine to Autism was published in 1998. In 2010 the British medical journal The Lancet retracted the study suggesting a link between autism and childhood vaccination with the MMR vaccine. **The thinking behind the retracted study is still valid:** a change in the environment is responsible for the extraordinary increase in Autism cases.

From 1990 to 2008 autism cases have increased 15 folds in the USA and the UK.

When there is a huge increase in a disease, scientists are certain that environmental causes are responsible.

A 2010 study is described in a December 17 Los Angeles Times article: "2010 Autism rate higher near freeways, study finds", by Shari Roan. Article excerpt:

*" Children born to mothers who live close to freeways had twice the risk of autism in a study published Thursday. The study, its authors say, adds to evidence suggesting certain environmental exposures could play a role in causing the disorder in some children..... Reported cases of autism increased by 57 percent from 2002 to 2006, according to the Center for Disease Control and Prevention..."*

Some interesting conclusions can be inferred from the latest research:

- Something has greatly changed between 2002 and 2006
- Toxic chemicals in the environment are to blame. Yes, but which ones?
- Vehicle exhaust alone cannot be blamed. 2005 car engines are 100 times less polluting than 1970's cars. Autism rate should have been much higher in the 1970's near highways.

The Autism huge increase happened with the appearance of Chemtrails and white washed bluish skies. Is there a correlation? Many people have pointed out this possibility within many websites. Chemtrails are chemicals. How toxic are they? Did they cause the 15 fold increase in Autism cases? This question must be scientifically pursued as toxic chemicals are considered by reputable scientists to be the most probable cause.

## SPOTTING THE EARTH COVERING AS-S

In a famous documentary scene, the late Alex (an African Parrot) was asked to compare different things by being asked the question: "What's different?", he responded "Color!". The same level of intelligence is required to spot the AS-S. The ability to distinguish color differences and their meaning is required.

### At Sunset and Sunrise

The currently very colorful and stunningly beautiful sunsets and sunrises are produced by the presence of the thirty thousand feet high thin artificial cloud, the AS-S. The behavior of sunlight hitting thin clouds at sunset and sunrise pinpoints and fingers the AS-S presence in the sky.

**Now at Sunset** (with an apparently clear sky). At the sunset location, the sky turns an orange color even when there are no apparent clouds. The sky opposite (turn 180 degrees) to sundown becomes pink. The sky above (zenith) becomes white. All these three colors indicate cloud presence.

**Before the year 2000 at Sunset** (with a clear sky, no clouds, no AS-S). At the sunset location, the sky stays blue (any cloud in that location becomes orange). The sky opposite (turn 180 degrees) to sundown becomes dark blue, almost black (any cloud in that location turns pink. The sky above (zenith) stayed blue (any cloud in that location becomes white, gray, or a shade of red/orange/pink).

**At Sunrise:** it is the exact same phenomenon (replace sunset by sunrise in the previous discussion)

### While Flying Under the AS-S at 25,000ft

While traveling in regional aircrafts (altitude = 25,000 ft), and looking toward the horizon, the AS-S presence is revealed by a bright-white color. It looks as if there is a wide white ribbon along the horizon.

### While Flying Over the AS-S at 45,000ft

While flying on a commercial Boeing 747 from London to SFO in May 2008, I observed tell-tale signs of the Total AS-S. The flight was racing the sunset, the sun was low on the horizon most of the time. The AS-S could be seen as a dark red/brownish layer that is very evident right above the horizon. It looks like red smog. The Total Artificial Sun-Shield could be seen over the Ocean, frozen Canadian region, and the USA.

### Whitish Night Sky

At night heat and light (which are radiation) are reflected up toward space. As radiation reaches the AS-S, part of it bounces back to Earth. Near bright cities, the AS-S acts as a reflector that bounces back some of the city light. This phenomenon makes the sky near cities whitish and reduces cooling; nights are warmer than they should be. White night skies can be easily seen from a dark location close to a brightly lit city.

### Artificial Sun Halo (ASH) A Chemtrail Signature

Almost without fail, brownish sun halos appear on thick white clouds formed by Chemtrails. These brown halos are a signature of AS-S hole patches. Unlike the rare natural beautiful Sun halos, dirty brownish artificial Sun halos are quite common after Chemtrail spraying.



### A special Case: December 20, 2010 Moon Eclipse - Blaming Non-Existent Volcanic Ash

Northern California skies were very clear on the night of December 20. There was an opening between two storms. The AS-S was completely wiped out from the local sky. The atmosphere was so clear that a lot of low brightness stars were visible near the full Moon (right before and after the eclipse). That was a rare treat as the artificially hazed out sky would allow only the brightest planets (such as Jupiter) to be visible near the full Moon. When the AS-S is present, the full Moon reflected and diffused light outshines and hides the low brightness stars. Official propagandists knew basic optical physics and prepared the unthinking populace by releasing the following news article PR garbage:

2010's only total lunar eclipse tonight, Alicia Chang, The Associated Press December 20, 2010:

*"... With recent volcanic eruptions around the globe dumping tons of dust into the atmosphere, scientists predict the moon may appear darker than usual during the eclipse, glowing an eerie red or brown instead of the usual orange-yellow tinge..."*

That was an attempt to blame non-existent volcanic ash for the possible unnatural eclipse moon colors!

There was a decision not to spray AS-S between the two storms as thousands of powerful cameras will be pointed toward the moon. Many would have shot weird planes with physically impossible contrails.

The propagandists retracted their PR:

*Clarification: Total Lunar Eclipse story: "In a Dec. 19 story about a total lunar eclipse, the Associated Press reported that recent volcanic eruptions may make the moon appear darker than usual during the eclipse, according to NASA's Fred Espenak. Espenak said later that new data shows the atmosphere is relatively clear of volcanic dust and that the lunar eclipse should appear bright"*

**Result of not spraying AS-S:** Sparkling clear skies with visible low brightness stars during a full moon as it used to be. This is a good comparison of clearly seeing things versus seeing things through the AS-S.

Without getting into technical light absorption, light emittance, and spectroscopy science, let just say that the AS-S, if it were present, would have acted as a filter and colored the eclipse a **dirty brown**.

**Dirty brown** is the Artificial Sun Halo (ASH) color. ASH are common after AS-S Patch spraying.

To NASA Propagandists: What happened to the supposedly tons of volcanic ash dumped in the atmosphere? Government scientist/meteorologist propagandists have used this ridiculous volcanic ash excuse in the past to explain a bizarre sky phenomenon that I witnessed a short time before sunset around July 4 2008. While driving towards San Francisco, I saw that the supposedly clear blue sky (it was actually almost white) had moving waves. The thinning and undulating of the AS-S was making it visible. The next day, so called scientists released a propaganda PR release that blamed a recently erupted Russian volcano for that sight. Russian and Alaska volcanoes are very active and erupt often! 50 to 70 volcanoes erupt on earth every year. People have a psychological need to have a reason, any reason for accepting what is going on around them. Psychology knowledge is being used against tax payers to make them believe and accept complete nonsense.

## WHY DID PLANES TOOK A SPRAYING BREAK AT THE END OF MAY 2010?

It was very unusual for AS-S spraying to slack off in Northern California. So the question came to mind. The best answer I can come up with is that there was a plan to upgrade and retool all the spraying methods, chemicals and equipment at that time. May weather is fairly stable almost everywhere in the world, not too hot or too cold, so it was a good period for retooling.

Since then, observations support that assumption. AS-S planes fly a little higher. There are no more visible daytime 3-plane formation. Single planes spraying three distinct chemtrail plumes are the norm.

Unfortunately for the AS-S sprayers, the May 2010 weather was unusual and cleaned out the total AS-S at the end of the month. That phenomenon damaged crops and vegetation in the Northern Hemisphere.

## WHAT NOT TO BLAME OR USE AS AN EXCUSE

**Conspiracy Theories.** Accusing scorched trees of being damaged by a non-existing conspiracy is absurd.

There is a proven conspiracy even though news outlets, big science agencies, and governments are mum.

**Cool August.** The SF Bay Area August 2010 has been unusually cold and foggy. Some may dismiss the tree damage by blaming the supposedly cold August weather, a high of 72 F and a low of 55 F can be hardly considered cold. The acute tree damage happened at the end of May. August had nothing to do with it.

**Normal Seasonal Variation.** Autumn has never started in the month of June in the Northern Hemisphere.

**An Infection: Virus, Insect, Bacterium, Sudden Oak Death.** Impossible. Too many species have been damaged in many regions in a short time span. Everything points to sunlight. Oak trees were first damaged years ago and the cause is well known. Sudden Oak Death is not contagious to almost all other species.

## THE MOON SHINES LIGHT ON THE TRUTH (MORE LUNATIC TRUTHS)

The albedo of an object is a measure of how strongly it reflects light from light sources such as the Sun.

The range of possible values are 0% (dark) to 100% (bright). A mirror has an albedo of 100% since it reflects all incoming light. Oceans reflect a small amount of light, roughly 10%. Land reflects anywhere from 10 to 25% of the Sun's light, snow up to 90%, and clouds reflect 10 to 90%.

### Earthshine is Created by a Very High Albedo

An earthshine is seen from Earth when the Moon is a **thin crescent**. Earthshine used to be a rare event. It is seen no later than a day or two after a new moon and if the Earth albedo is much higher than normal. When an Earthshine is seen, it means that the overall albedo of the Earth is high. In other words, a lot of the incoming sun light was reflected back to space by clouds (snow, or other reflective matter) in the west.

Several years ago, Earthshines could not and have not been seen several days after a new moon. Within the last two years, I witnessed such sights more than once in the San Francisco Bay area. Other witnesses have taken pictures of such previously impossible events. The only possible explanations are that:



- The incoming sun light irradiance is much higher than it used to be
- The Earth Albedo is much higher than it has ever been
- Both of the above (this is the most probable reason)

### Earthshines Several Days after a New Moon

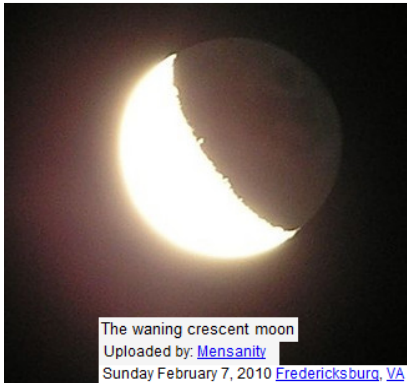


Photo taken in Longjing Township, Taichung County, Taiwan on 13 September 2010, 18:39 (UTC+8) by 阿爾特斯.

### October 24, 2010 - San Francisco Chronicle Travel Section

To illustrate a travel article on moonscape like earth region, the San Francisco Chronicle used a stock picture of a plane flying at night during a full moon. It was clearly an AS-S spraying plane with 4 engines and 3 non-symmetric chemtrails. I have personally witnessed many 4 engine/3 chemtrail planes during the daytime with the use of 7x magnification binocular. (The pictures below are fair use, it is not copyright infringement)



The 3-chemtrails are very white while the BBC single soot Chemtrail is very black.



### October 22, 2010 - Caught in the act by BBC News

In a show about moon minerals and water, the news was illustrated with a shot of the moon. As the moon was being filmed, a plane spraying black soot crossed the whole screen. I saw this TV news item on an HD TV screen. There was no mistake, it was spraying one single black smoke trail. This snapshot is low resolution as it was a screen capture of a YouTube submission of the same BBC news article.

## NASA LIES, OBSESSIONS, AND APPARENT INCOMPETENCE

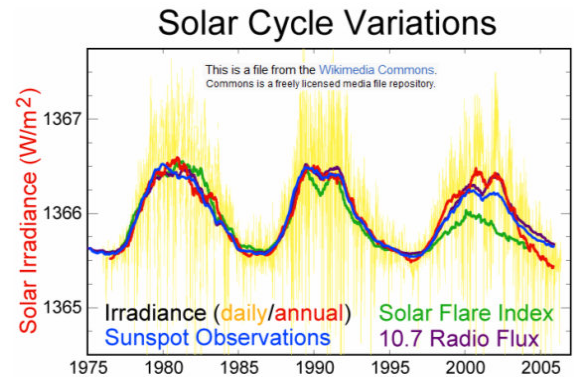
### Past irradiance - Sunspots and Irradiance Value Connection

The maximum irradiance value correlates with the number of sunspots. As the number of sunspots increases so do the maximum irradiance value. NASA has satellites in low Earth orbit that measure the sun irradiance. A historic data set is shown on the graph (created from NASA data). There is a maximum (max or peak) every 11 years. The last peak was in 2000. The next max was expected in 2011. Several years ago, NASA claimed (without scientific proof) that the next max will be the most powerful ever. According to an old NASA prediction, the minimum should have been reached in 2006, after that the number of sunspots and the irradiance value should have been on the increase. That did not happen.

## NASA Solar Cycle Prediction

An early NASA prediction for the current solar cycle was made in March 2006. Reference: [science.nasa.gov/science-news/science-at-nasa/2006/10mar\\_stormwarning](http://science.nasa.gov/science-news/science-at-nasa/2006/10mar_stormwarning)

*"March 10, 2006: It's official: Solar minimum has arrived. Sunspots have all but vanished. Solar flares are nonexistent. The sun is utterly quiet. Like the quiet before a storm..... This week researchers announced that a storm is coming--the most intense solar maximum in fifty years. The prediction comes from a team led by Mausumi Dikpati of the National Center for Atmospheric Research. "The next sunspot cycle will be 30% to 50% stronger than the previous one," she says. If correct, the years ahead could produce a burst of solar activity second only to the historic Solar Max of 1958. "*



## What is wrong with the above NASA/NCAR Solar Peak Prediction?

There was and still is no scientifically known way to predict Solar cycle maximum intensity. Why did such a supposedly reputable organization attempt such an exercise? Is NASA setting up the Sun as a future scapegoat?

A Possible Answer: NASA knew something other than the Sun will cause havoc with the Earth soon.

## NASA Predictions

Once they started this silly charade, they could not stop. NASA kept updating and changing the prediction. The complete prediction list and dates are: (Reference: <http://solarscience.msfc.nasa.gov/predict.shtml>)

- 2006 Mar 10: predicted the most intense solar maximum in fifty years
- 2008 Mar 28: predicted peak: 130-140 sunspot range, solar max predicted between 2010 and 2011
- 2009 Jan 5: predicted peak: 100-110 sunspot range
- 2009 May 29: predicted peak: 80-90 range
- 2010 October 5, predicted peak: 60-70 range, solar max predicted between May-July 2013

**2011 Wikipedia Summary:** The last solar maximum was in 2000. The next solar maximum is currently predicted to occur in May 2013 and to be one of the weakest cycles since 1928.

NASA is just making up prediction dates that suit some hidden agenda.

## Solar Electromagnetism Interference?

One explanation for NASA idiotic attempt to predict the unpredictable is that, NASA scientists knew something with a strong electromagnetism field was approaching the inner solar system. It was thought that a result will be a great increase in Solar Sunspots, so they predicted the next Solar Max will be the most powerful ever. The opposite (in terms of number of sunspots) happened.

## NASA Current Solar Missions – Strong Emphasis on Electromagnetism

NASA is heavily involved in studying the Sun, especially the Sun electromagnetism and how it affects life on Earth. NASA mission list shows that there is a strong official emphasis on Earth and Sun electromagnetism.

## Solar Dynamics Observatory (SDO) Satellite

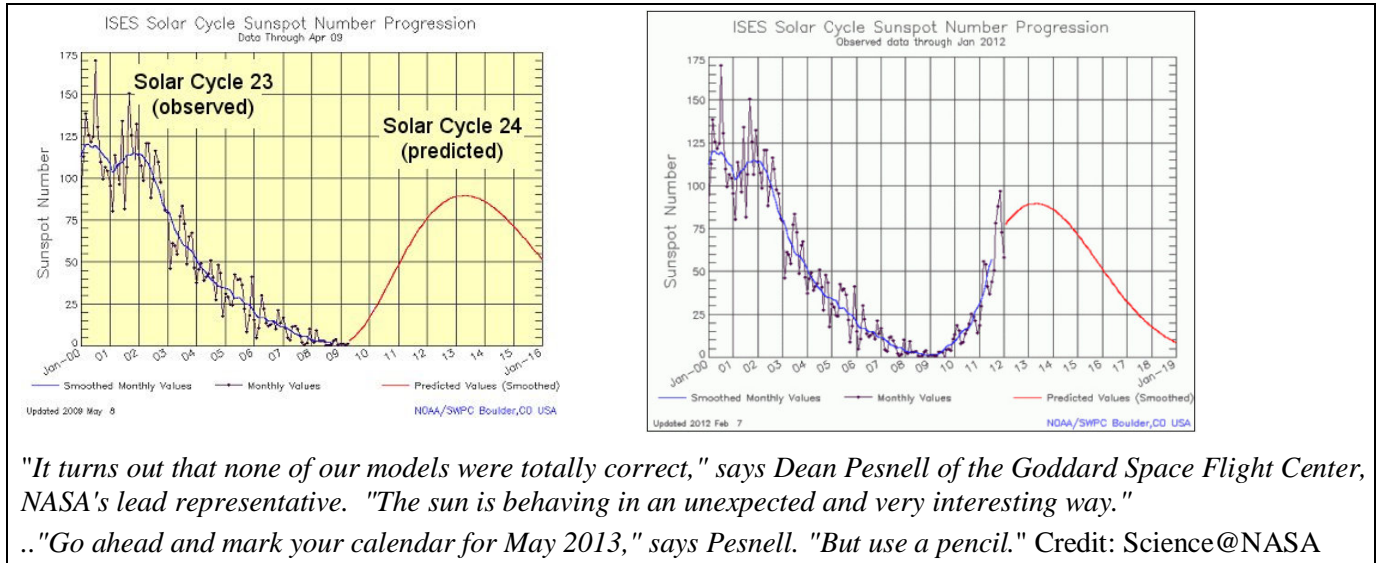
To be able to come up with a way of predicting sunspot and CME (Coronal Mass Ejections), NASA launched the SDO satellite: *"The Solar Dynamics Observatory began its mission on Feb. 11, 2010, in an effort to help us understand the sun's influence on Earth"* It is only after understanding future SDO data that NASA can have a chance in hell of predicting a solar max intensity. That is still way into the future if we have a future.

**Current NASA Prediction reasons:** Anyone with a decent hobby telescope can see and count sunspots.

Historically, the solar maximum happens when the total sunspots are at their maximum and the solar minimum (the valley or dip in the curve) when the total sunspots are at their minimum or non-existent.

Sunspots pretty much disappeared from the sun surface so NASA kept changing its solar maximum lie.

Around April 2009 (and January 2012), the following laughable graphical prediction was offered:



### What is the ISS mission?

According to NASA: "Aboard the International Space Station, astronauts work to improve life on Earth and extend life beyond our home planet". What does that mean? Does anyone know what the true ISS mission is? Other than reducing astronauts' bone density and fixing broken space station plumbing, what on earth are they doing up there? That is a very expensive Endeavour. Each shuttle launch cost more than \$1 billion. That is a lot of money in this Second Depression

### No Shuttle Replacement: Incompetence or Moot Point

Why are American Astronauts hitching rides on Russian Soyuz capsules? That must be very embarrassing. NASA knew well over 10 years ago that the tired old pathetic 1970's Shuttles will have to be replaced with a new and improved manned space rocket. It should be noted that Soyuz has no replacement either. There are at least two reasons NASA top management failed to do so:

- All their energy, work, time, and expertise are needed for a much more important unknown mission.
- It will be a moot point by or shortly after 2010: no shuttle or anything else will be needed by then.

As a face saving technique, NASA claims that commercial companies will replace the Shuttle. What a piece of manure. NASA liars, can't you come up with a better piece of propaganda garbage?

### NASA does not Understand Physics Anymore!

There were three satellites (one American on September 24, 2011, a German one on October 22, 2011, and a Russian one on January 15, 2012) that crashed on earth due to orbit decay or failure. In the past NASA was able to accurately predict both the crash location and time regardless of solar activity. All known orbital mechanics laws, atmospheric, and solar data were used in computerized models to accurately predict reentry many days in advance. The Russians have no idea where their failed Mars probe crashed!

The German space agency claimed that they cannot **currently** determine reentry due to: "*Fluctuations in solar activity, which increase atmospheric drag. ..Currently, the re-entry date can only be calculated to within plus/minus one day. This time slot of uncertainty will be reduced as the date of re-entry approaches. However, even one day before re-entry, the estimate will only be accurate to within plus/minus five hours*".

NASA gave a similar excuse as they do not understand all the laws of physics that are currently affecting Earth.

The Sun is being blamed and set up as a scapegoat for not well understood cosmic behavior.

### HUMAN STUPIDITY OR HUMAN NATURE?

Why are most people unable to see the obvious? There are strange planes flying at the wrong altitude, spraying chemicals, and yet most ignore them. Are humans naturally stupid? Yes, they are! Here are 3 proofs:

### Ignorance is Bliss - A scientific Proof

Steven Shepherd and Aaron C. Kay published in the Journal of Personality and Social Psychology (November 2011) a scientific paper titled: "*On the Perpetuation of Ignorance: System Dependence, System Justification, and the Motivated Avoidance of Sociopolitical Information*"



Shepherd and Kay wanted to find out how people cope when they feel uninformed or unable to understand important issues. Do they seek out information, or do they simply ignore the threatening issue at hand? The authors expected that a lack of knowledge would motivate an increased, unbiased search for information, thereby facilitating participation and engagement in these issues

The researchers discovered that ignorance breeds more ignorance. The authors provide evidence that:

Ignorance about an issue → dependence → government trust → avoidance of information about that issue.

**In plain English: the more people are ignorant about an issue, the more they trust the government.**

### Color Change Blindness

During a recent scientific study, participants were asked to spot the differences between pre-change and post-change versions of a series of pictures. The test results showed that the addition or removal of an object from the scene is detected more readily than changes in the color of the object, a result that surprised the scientists. Most people are unable to see damaged trees or if they see them, they just don't try to understand the causes.

### Selective Attention Test (Simons & Chabris, 1999)

Chabris and his co-researcher, psychologist Daniel Simons wanted to answer a question: Is it possible to see something really, really obvious and not perceive it? They designed many experiments to answer that question. In one psychological experiment, human test subjects were shown a video and given the following instructions: Count how many times the players wearing white pass the basketball. In the film three players are wearing white and three others are wearing black. "Whites" pass a ball only to another "white". "Blacks" pass another ball to only another "black". In the middle of the play, a man wearing a gorilla suit walk slowly to the middle of the scene, stops, face the camera, and thumps his chest for a few seconds than exit the scene. After watching the clip, test subjects were asked if they saw a gorilla, very few said yes. Most said no! AS-S spaying planes and scorched vegetation are the 800 lbs gorillas in the middle of the room that most humans fail to see. Instead they just chat about the latest gadgets, hottest celebrity, or "reality" show.

## PHYSICS EXPLANATION OF DATA AND OBSERVATIONS

### Current True Irradiance

From measurements made by official weather stations when there was no AS-S in the sky, the true value of Earth Irradiance is estimated to be 1,700 W/m<sup>2</sup>. That value is off scale.

It is evident that the insolation reaching earth has increased by 25% to 33% and that AS-S reduces the sunlight energy reaching the earth surface by the same amount. The most talked technique that can be used to reflect light back into outer space is spraying reflective stuff in the sky.

Weather modification studies have shown that a 2 to 5 % sunlight reduction is sufficient to mitigate man-made global warming. There is a 5 to 10 fold difference between official science needs and what is happening.

### The only possible explanations based on currently understood laws of physics are:

1. Planet Earth got closer to the Sun by 12% to 15% than normal.
2. There is an new unknown source of light between the Sun and Earth
3. The Sun is emitting 25% to 33% more light than normal
4. A combination of the above

Number (1) and (2) mean that there is something that produced and may be still producing a pull on Earth that brought it slightly closer to the Sun. In other word, there might be a new planetary body more massive than Earth between the Earth and the Sun. That rogue "planet" impacted Earth orbit around the Sun.

### Probable Proof of Earth Orbit Change - Sun rose 2 days earlier in Greenland!

There is a recent article published on The First Post, UK, written by Jonathan Harwood and dated January 14, 2011: "Global warming blamed for melting the horizon as sun comes up 48 hours too soon"

*Scientists claim to have discovered more evidence of global warming after the sun rose two days early in Greenland, apparently because melting glaciers have lowered the horizon. The polar night usually ends on January 13, but this year residents of Ilulissat, the third largest settlement in Greenland, were surprised to see dawn arrive just before 1pm on January 11 after six weeks of perpetual darkness...."*

Ilulissat is located 3 degrees north of the Arctic Circle. The article cited some possible causes: (1) Earth axis shift (ruled out by astronomer), (2) Change of horizon due to melting glaciers, (3) a light mirage.

The Original News was from KNR a Greenland broadcasting company.



According to LiveScience.com, John Walsh, a professor of atmospheric science at the University of Alaska Fairbanks said *"In a nutshell, there can't be a change in the true sunrise, because that would **require the Earth-Sun orbital parameters to change.**"* The non-scientific English translation of what that nice Alaska scientist said is: "if the Sun rose two days earlier, it means that Earth orbit has changed. Since Earth orbit cannot change, witnesses' eyes are lying to them."

**If we apply Sherlock Holmes rule** "when you have eliminated the impossible, whatever remains, however improbable, must be the truth" there is only one answer left: Earth orbit around the sun has changed.

## EXTRAORDINARY CLAIMS REQUIRE EXTRAORDINARY EVIDENCE

Whoever said that **"Extraordinary Claims Require Extraordinary Evidence"** does not understand the scientific method. Once a theory or a proposition is proven, it is proven. Period. People who use such an intellectually dishonest argument cannot be pleased. It would not matter how water-tight a proof is, a critic in denial would say: "The proof is not good enough, because it doesn't dice and slice too, and even if it dices and slices, it can't dance the Cha Cha! So there!"

**Extraordinary evidence demands straightforward complete, clear, and uncontestable explanation** based on known scientific principles. The presented obvious and extraordinary evidence is vigorously suppressed or ignored by official science, major country governments, and the press. Why is this truth classified?

## PROBABILITY

Let's figure out the mathematical probability that the irradiance (sun intensity on earth) has increased.

If there is a change in some data measurement, say the insolation value is 25% greater than it should be. It is fair to say there is a 50% chance that the irradiance has increased. The probability that it is caused by something else (for instance measurement errors) is also 50%

**Probability of irradiance increase with one item =  $1 - 0.5 = 0.5 = 50\%$**  (fifty/fifty)

If there is only one data change, I would not believe in such nonsense. I would think that it is obviously the raving of a lunatic conspiracy theory nut. If there are changes in many physically observable data such as

- Earthrise several days after a new moon with no cloud cover in the west.
- Trees and vegetation being scorched in May 2010 in SF area (right after the insolation increase)
- Trees and vegetation being scorched in May 2010 in all over the USA
- Trees and vegetation being scorched in May 2010 in all over the Northern Hemisphere
- Tulip trees blossoming at the end of November in the SF area
- Planes spraying chemtrails to reduce sunlight intensity by 25%
- Sun rise 2 days earlier north of the polar circle

If we assume that each of the above reasons have a probability of 50% on their own, then:

**Probability of irradiance increase with 3 items =  $1 - 0.5 \times 0.5 \times 0.5 = 0.88 = 88\%$**

**Probability of irradiance increase with 8 items =  $1 - 0.5 \times 0.5 \times 0.5 \times 0.5 \times 0.5 \times 0.5 \times 0.5 \times 0.5 = 0.996 = 99.6\%$**

Even though the analysis is very conservative, the probability is greater than 99%.

There is no doubt that the sun irradiance increased and that the most probable cause is in space, not on earth. Human effects on global warming are negligible.

## WHEN DID THE MAJOR CHANGES HAPPENED

Sometimes between 2003 and 2005, AS-S spraying was widespread and unrelenting, and Earth changes accelerated (damaged vegetation, the 2005 strange Amazon Rainforest drought). Measured insolation increased, people started avoiding sun exposure even during winter. Earth orbit has been first impacted between 2003 and 2005. In addition to the flora impact, it was announced by major earth upheavals: an 8.0 earthquake off the coast of Tasmania followed by a 9.4 in December 2004.

## VERIFY: CONDUCT YOUR OWN DUE DILIGENCE

Do not believe anything written in this scientific and investigative report without verifying it.

Checking the presented facts is easy. All you have to do is travel back in time and witness them.

## Understand Causes and Effects

Even within the scientific community, there is some confusion on causes and effects. Many chemtrails observers have noticed early tree color changes and other damages and thought they were caused by chemtrails.

A quick internet search with the terms: Chemtrails AND trees will confirm that many people found out that there is a connection but assumed that chemtrails are the cause of tree damage.

Chemtrails actually mitigate tree and vegetation damage. If the chemtrail spraying operations were not carried out, most of us would have starved to death by now due to a horrific world-wide crop failure.

### **Overcome Truth Blindness**

People have not changed since it was said: “Do you have eyes but fail to see? Do you have ears but fail to hear? Don't you remember?” In other words, people have the capabilities to use their little gray cells but fail to do so. Anyone who believes in their own eyes can carry out great scientific and investigative work.

### **Verification Approach**

To avoid being deceived, consult reference books published before 1995 to check facts.

Do not use newer NOAA and NASA web sites and books. Do not use Wikipedia as a final check.

## **SCIENTIFIC METHODS**

To carry out the required rigorous scientific and investigative techniques, it is required to:

- Plan and organize
- Conduct very straightforward visual observations
- Compare colors and accept your eyes observations
- Use social networks to create **Scorched Earth & Chemtrail Research Teams (SECReT)**
- Compare previous and current conditions
- Apply high school level physics
- Examine date-stamped digital archival materials: photos, film, archived news TV footages
- Combine **SECReT** member observations and map out vegetation damages and unusual behavior.
- Devise and carry out other observation and scientific techniques.
- Carry out experimental data acquisition, such as:
  - Measure Insolation values above the AS-S (launch equipment with a weather balloon)
  - Measure the Earth-to-Sun distance (it is very easy to do).
- Finally come up with your own conclusions and required future actions.

That's all. That is what scientists do (NASA scientists do additional things such as propaganda).

### **Verify the May 2010 Tree Damages**

The damage inflicted on vegetation by the extreme insolation of May 2010 can be easily checked by looking at date stamped digital photographs and films

#### **Personal Archives**

Gather **SECR** Team member digital photo and film archives and hunt for telltale damage

#### **Special Homework**

- 1) See if you can find out pictures of the University of California at Berkeley main entrance dated in mid May, June, August, November, and December 2010. Compare them.
- 2) Do the same thing with the main Google campus (World Headquarters) in Mountain View, CA

### **Chemical Analysis**

Turn a car top (or another surface - keep that surface clean at all time to avoid contamination) into an AS-S chemical residue collector. When the conditions are right AS-S chemicals are brought down with atmospheric water condensation. Condensed water dries out and leave a chemical residue. Collect the residue and send it to a chemical analysis laboratory for analysis. Compare residue chemicals with those collected in other areas or even countries by other members of your **SECReT** team.

### **Measure the Irradiance value above the AS-S**

It was shown that the earth irradiance has increased (probability > 99%). The irradiance can be easily and precisely measured by almost anyone or a small team. The tests cost between \$1,000 and \$5,000.

Build a simulated low altitude irradiance data gathering satellite. The required items are:

- a weather balloon
- one, preferably up to three high quality solar spectral pyrometers with fast response time
- inclination (pitch) indicator (the pyrometer orientation is very important)
- radio-telemetry equipment (or a technique to recover the equipment - parachute)

- altimeter
- data acquisition software and hardware, and a computer
- an insulated enclosure, maybe a heated enclosure to obtain good data.

**Before launching a balloon read and comply with FAA PART 101 Publication** (Moored Balloons, Kites, Amateur Rockets, and Unmanned Free Balloons). There is no need for a permit if the payload is light enough.

**Extra homework credit:** find the exact AS-S altitude.

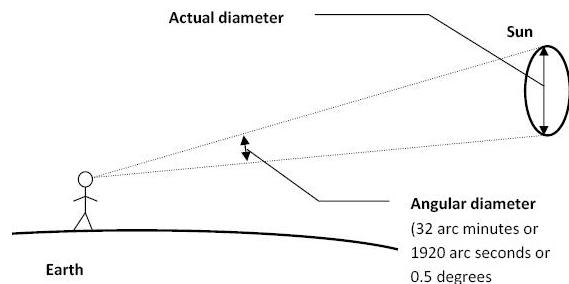
A weather balloon can go as high as 100,000 ft. 100,000 ft is considered to be the edge of space, it is above 99% of the atmosphere. Some serious engineering and data acquisition work is required to get good results. To produce good data analysis, procure one or more engineering or physics graduate students (there are cheap) Conduct an internet search for information. Example: Project Icarus (<http://boydclassroom.com/Camera.htm>) *"What is most astonishing about this launch, named Project Icarus, is that anyone could do it. The budget is so small as to be almost nonexistent ..... so that even if everything went wrong, a second, third or fourth attempt would be easy. All it took was a grand idea and an afternoon poking around the hardware store."* So get your fat AS-S off the chair and make it so.



### Measure Earth-to-Sun Distance

A classical tool is a heliometer. A heliometer is a type of telescope that was used to measure the angular diameter of the sun. It is now used to measure angular distances between celestial bodies. If a member of your **SECR Team** has access to the right astronomical telescopes, very precise measurement can be made. Distance is obtained by measuring the sun angular diameter.

The normal sun Angular Diameter varies from 31.6' (on July 4) to 32.5' (on January 4).



This report observations and conclusion suggest that there is a 50% chance that it currently varies from 35.4' to 37.4 (There is a 50% chance that the earth-to-sun distance and the Angular Diameter has increased by 12 % to 15 % due to an earth orbit change). A Sun eclipse viewing box can be used to measure the sun angular diameter. If the viewing box pinhole is one meter distance from the box bottom, the projected sun diameter is about 8 mm and the measurement precision is  $\pm 10\%$  at best. Such a precision is not adequate. Due to light diffraction phenomenon, the precision cannot be improved just by increasing the box distance from the pinhole to the bottom to say 10 meters.

See <http://newyorkscienceteacher.com/sci/files/user-submitted/AngularDiamSun.pdf> for an example.

A good way of getting a  $\pm 0.5\%$  precision is to use the "Two Pinhole Method" described in:

#### **"Measuring the angular solar diameter using two pinholes"**

(A PDF file can be downloaded. Do an internet search.)

Author: Costantino Sigismondia, published in 2002, American Association of Physics Teachers

**Abstract.** At the turn of the sixteenth century Tycho Brahe and Johannes Kepler made single pinhole measurements of the solar diameter. Their accuracy was limited by diffraction ~unknown to them! and the motion of the image on the screen. We discuss how two pinholes built on the same mask can be used to bypass all the problems inherent in the single pinhole approach. The distance at which the two images of



the Sun are in contact is the only measurement needed, and the experimental accuracy is much better than measuring the diameter of a single moving image. We obtained 0.5% accuracy, sufficient to follow the angular variations of the solar diameter due to the motion of the Earth in its orbit.

### Chemtrails and AS-S Spraying Planes

Reread the "Spotting an AS-S . Spraying Plane" section. Additional spotting techniques are listed here.

#### **Flight Schedule - Find out if overhead planes are not commercial**

Use a Live Flight Tracking website service to know whether the planes above you are commercial jets or something else. A service example is: <http://flightaware.com/live/airport/KSFO>. The moment suspect planes are observed, it is possible to immediately check whether they are commercial or AS-S planes by using smart phone flight tracker apps. Yes, there is an app for that™ (Apple trademark).

#### **Plane Livery**

AS-S planes used to come in only one color: military light grey silver. Now many AS-S planes sport all red or all green underbelly color. Aircraft livery (paint scheme applied to a plane) are trademarked art and all commercial airline liveries are well known. Take a high quality zoom picture of the green or red AS-S planes and see if you can match the color scheme to any known airline that flies in the area. If there is no match, it is not a commercial jet.

Poor government employees: they came up with a great camouflage idea that will help identify AS-S planes. After all only military equipment uses camouflage! How dumb.

#### **Before and After Comparison: Movies, Car Commercials, TV Shows**

Compare older (pre 2000) and current (post 2005) travel TV show such as Rick Steves' Europe. The first shows were called *Travels in Europe with Rick Steves*. The older shows have very crisp blue skies and no contrails while the newer episodes have visible chemtrails and whitish blue skies. Similar comparisons can be done with many other shows. Car commercials can be compared. The older ones (especially the ones filmed in California) show beautiful blue skies. Most newer ones have chemtrails.

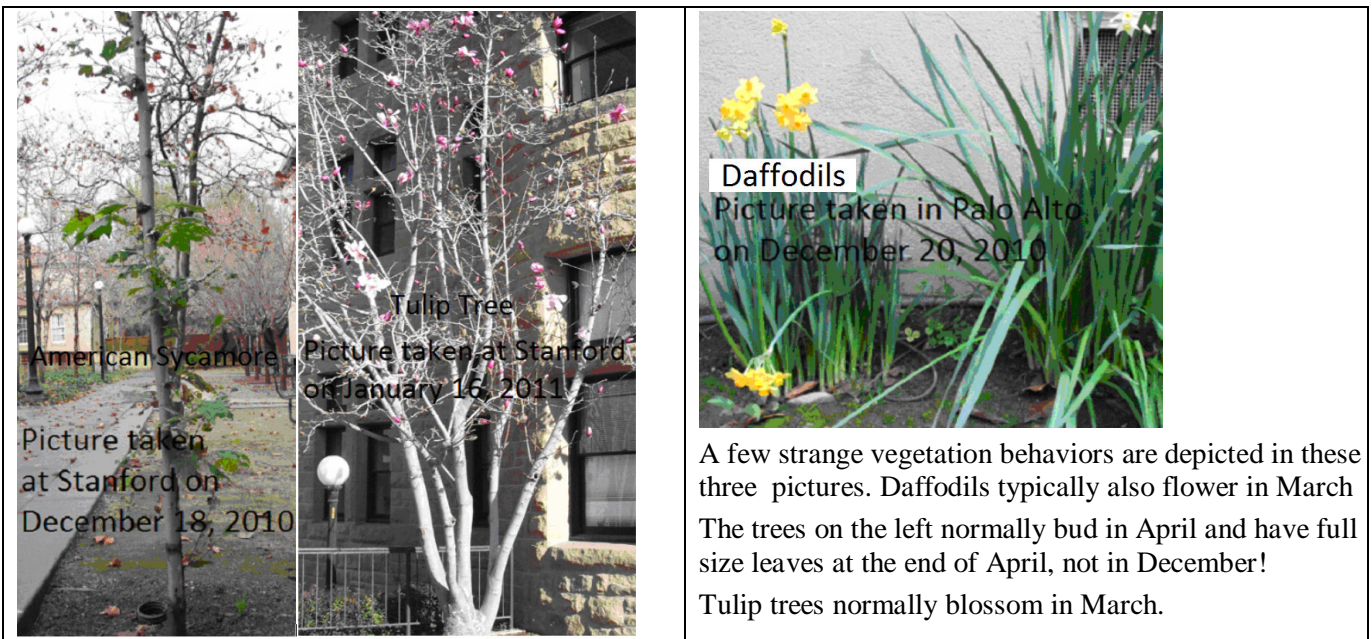
Many Hollywood movies released in December 2010 and filmed during the summer in southern California show scorched trees. Check them out.

#### **Present White Washed Sky versus Past Blue Sky**

There are so many cases in the news that clearly show chemtrails in the background. To list just a few:

- Rose bowl parade (in Pasadena, CA)
- Baseball spring training (Arizona)
- Movies, News articles (television and newspaper pictures)
- Full moon photographs taken at sunset

### SPRING BEHAVIOR IN DECEMBER 2010-JANUARY 2011 - SPRING IN WINTER





Normally (before 2000) trees and flowers start blossoming in March. Spring begins in March Seasons have not been normal since at least 2004 in the San Francisco Bay area.

**Winter 2010/2011 SF Bay Area Weather.** There were several frost (temperature below 32 F) days in the first week of December 2010 and the first week of January 2011. In addition, it rained during almost every day in December. From the point of view of air temperature and rain, that was not a mild winter.

On a sunny day, even with a temperature of 45 F, it is cold in the shade. If one stands in the sun, the temperature felt hot, almost spring like. That is due to the high solar irradiance that was absorbed by the skin.

### **Earliest Spring Like Behavior**

The earliest case was a Tulip Tree in Palo Alto that had blossoms on the second week of December 2010.

There was frost during the first week of December! That meant that it started blooming in November!

(**Note:** I am not a biologist. I might mistake daffodils with Iris, Maple trees with Sycamores, etc. If the listed plant names are not correct, do not use that as an excuse to declare everything written in this report to be false..)

### **Other Strange Behavior**

Some species of San Francisco Bay Area trees that usually lose their leaves by mid-December 2010 still had them on by mid-March 2011. Enough with the laundry list of weird behavior, there are too many to list.

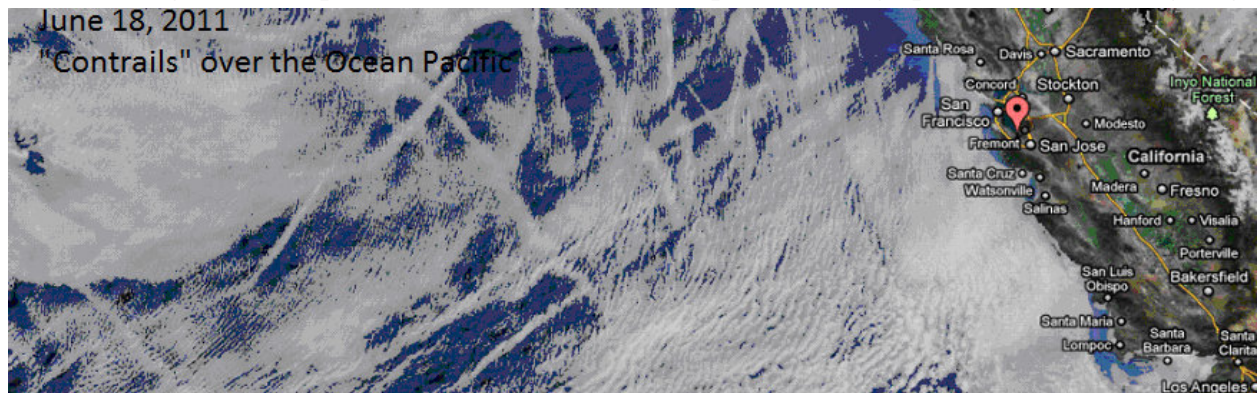
## **THE CONTINUING SAGA**

Between June and mid August 2011, planes are still heavily spraying but are less visible in the Bay Area.

During the summer, there is no need to heavily spray over land in the daytime. Most of the work is done over the Ocean Pacific and at night over land. Prevailing winds bring the haze over the US land.

**They are back!!!** August 12, 2011 was the first day in almost 3 months that a whole fleet of AS-S tankers sprayed in the day time in the San Francisco area. There was an unusual weather system that cleaned the air.

**The visible light satellite picture below shows that a few planes can fog up the skies over a huge region.**



## **Two Illustrated Chemical Residues Types**

1. After heavy night condensation, cars in the bay area have evenly distributed blobs of yellow droplets. This chemical covers everything but it is more visible on cars. It is made of AS-S chemicals that fall on earth.
2. The other chemical has the form of non-uniform spread-out splatter of fine yellow powder. Their shape is flat and circular, they look like paint drops. They came down when the skies are clear and the atmosphere dry. After one or two week in the sun, they turn a darker orange color. These originally yellow drops appears in day time as well as at night. These residues are one of the many chemicals used to produce AS-S, a final AS-S product or a chemical reactant.

- The closest photo shows large yellow spots (that looks like paint splatters). At that time these chemtrail residues were over cars everywhere in the Bay Area.
- The farthest photo shows evenly distributed yellow powder blobs that were left after overnight condensed water evaporated. That car was parked for several days and accumulated a lot of residue.



## Oh No! Not Again: Bay Area Fall Colors in Mid August 2011

It is happening again. The leaves of many tree species have started turning color in mid-August 2011. The color change is more pronounced on the sides that receive the most sunshine. Only people in extreme denial, plain stupid, incompetent news reporters, or unethical hell-bend propagandist lying paid operators would deny that the damage was caused by extreme sun light intensity. There is no other possible cause.

## Heavenly AS-S in Paradise

During a 2011 trip to a small Hawaiian island, one of the first thing I noticed was a paint-like yellow sticky chemtrail residue on a rental car. Then, two days before the end of our Hawaii trip, a fleet of planes started spraying chemtrails overhead.



In the top left photo, two planes flying in a line created the left chemtrails, the cloud in the center was a chemtrails spewed by a tanker. The center picture shows a lot of chemtrails that messed up a beautiful Hawaiian sunset.. The right picture shows an ASH (Artificial Sun Halo) created by the artificial clouds. To the best of my knowledge, there is very little air traffic in the middle of the Pacific Ocean. Why did these planes come? Later we learned that a major storm was going to hit the islands within 2 days. Storms clean the AS-S out of the sky, that is why a fleet of planes sprayed chemtrails.

## HOUSTON, WE HAVE 1/2 BILLION PROBLEMS AND COUNTING.

*In the Dallas Morning News of Friday, April 6, 2012 there was this article: **Texas drought destroys half a billion trees** "Up to half a billion dead or dying trees have been tagged as victims of last year's Texas drought, which severely scorched wide-open farmland and took a toll on the state's cities, particularly Houston. .... The Texas Forest Service estimates 100 million to 500 million forest trees may have succumbed. In urban areas, another 5.6 million trees were killed. "*

It is true that there was not a lot of rains in 2011 in Texas. The reduced precipitation is not in itself enough to explain the tree scorching. It just exacerbated the effect of the sun radiation.

The tree scorching is happening all over Earth. It is not just limited to Texas or drought areas. As of April 2012, scorched trees are visible all over the San Francisco. Many trees are dead. Others have the branches with maximum sun exposure burned, while the other branches produce just a few leaves.



Damaged and partially damaged trees are everywhere.

Date Taken: April 19, 2012 - Location: San Jose, CA, USA

## Summary

### **UNDISPUTABLE FACTS**

Earth is going through a more extreme global warming than officially acknowledged. The incoming solar radiation has greatly increased. The current sun radiation damages vegetation when it reaches the ground without chemtrail interference. All over the world, fleet of planes are spaying chemicals that whiten the sky and reflect back into space 25 to 33% of additional incoming sun light. News outlets are not presenting any of these very obvious facts to unaware tax payers.

### **MOST PROBABLE CAUSE**

My best educated guess is that the Earth orbit has changed and that the Earth to Sun distance was reduced by 5 to 15% by a cosmic influence.

NASA knows the true cause and is hiding it from the 99%.

**Trees do not lie, cannot lie, and have never lied.**

**Trees are our mine canaries.**

**Are we (the earth seven billion people) next?**

**This is the End of the Scientific and Investigative Report**



## About the Author

Many years ago, a French airport security agent called me l'homme au chapeau (pronounced Lom O'Shapo, meaning the Man with the Hat) to get my attention. I was wearing the hat in this page picture.

I have never worked for any governmental agency. All the discoveries of this report are based on visual observations and sound scientific principles that anyone can replicate.

I had dozens of premonitions that came to pass. The only ones that have not occurred yet are revealed in the next section. The reported results and conclusion deduced through observations and known scientific principles correlate well with my inner knowledge.



### Lom O'Shapo

(pronounced *L'homme au chapeau*)

Is it possible to see through time and travel through time? Short answer: the current laws of physics say yes.!

#### **PHYSICS NOBEL PRIZE LAUREATES DO NOT UNDERSTAND THE CONCEPT OF TIME - NO ONE DOES.**

The Fabric of the Cosmos: Space, Time, and the Texture of Reality" a recent popular science book written by Brian Greene, a physicist is summarized in Wikipedia:

**Chapter five, *The Frozen River***, deals with the question, "Does time flow?" One of the key points in this chapter deals with special relativity. Observers moving relative to each other have different conceptions of what exists at a given moment, and hence they have different conceptions of reality. The conclusion is that time does not flow, as all things simultaneously exist at the same time.

**Chapter fifteen, *Teleporters and Time Machines***, is about traveling through space and time using intriguing methods. Quantum mechanics is brought back into the picture when the reader comes across teleportation. Puzzles of time travel are posed, such as the idea of time travel to the past being a possibility. The end of the chapter focuses on worm holes and the theory behind them.

Physics Nobel Prize Laureates do not understand the concept of time and state that the past, the present, and the future are happening simultaneously.

None of us understand the concept of time. So don't make the stupid claim that seeing into the future is scientifically impossible. Only people who do not understand the meaning of the word science make such idiotic statements. It is possible. Cutting edge physicists say it is so.



# Mektoob

Mektoob is Arabic for "it was written". Its meaning is: a divinely written destiny that cannot be avoided.

---

*".... He wondered again for whom he was writing the diary. For the future, for the past -- for an age that might be imaginary. And in front of him there lay not death but annihilation....."*

*....And if all others accepted the lie which the Party imposed -if all records told the same tale -- then the lie passed into history and became truth. ...And yet the past, though of its nature alterable, never had been altered. Whatever was true now was true from everlasting to everlasting. It was quite simple."*

(Excerpt from George Orwell's "1984")

---

## INCOMING FUTURE EVENTS

Since NASA have made some ridiculous speculations, I will share my "speculations" and see who is better at seeing into the future. The events listed in this section will happen. The timing is up to laws of physics.

The experiences are listed in the order I had them

### Appearance of a "Second Sun"

**Summer 2008 Psychic Dream:** I was looking down on the San Francisco Bay area as if I were in a low earth orbit. I sensed a presence (a person, a being) next to me. The green belts, the mountains, and the whole metropolis were visible. I looked up. Next to the sun was another "planetary" body with the same apparent size as the moon or sun. Suddenly both the sun and the other space body moved together from the zenith to the horizon within seconds. It was of course the earth that was rotating at an incredible speed. I looked down again at the San Francisco area and felt great sadness that it will be gone.

**I had two additional similar experiences. Interpretation of all 3 experiences:** A planetary body will move so close to Earth, it will appear as a second Sun and seems as bright and as big as our star and will appear located near it. Then, the Earth will suddenly rotate at a violently destructive high speed.

The San Francisco Bay Area and the city of Algiers (Algeria), among others, will be destroyed.

### 8.0 Earthquake in Topeka, Kansas

Topeka, Kansas will experience an 8.0 earthquake. This event will immediately be followed by two 9.0 earthquakes that will hit in one or two locations somewhere on Earth.

### East to West Earth Sinusoidal Wobble

**November 30, 2011 Psychic Dream:** I was looking at the rising sun right after sunset. The sun is low on the horizon. Suddenly It quickly moves up, then down, and then up again as if following a sinusoidal wave. I had a strong visual clue that the regular sunrise on that day was exactly 6:00 am.

**Interpretation:** On a future day when the sun rises at 6:00 am in the San Francisco Bay, Earth will experience a significant wobble (an east to west oscillation) that will not go unnoticed. This will happen in mid May or mid July of 2012 or 2013, or a later year (that is on a day with a 6am sun rise in San Francisco).

## OUTCOME

Let's truly speculate what will happen once Earth is flipped quickly. According to well known principles of physics, fluid mechanics, and dynamics, after the earth stops following its forced electromagnetic induced high speed motion, tectonic plates will continue moving due to inertia. Instead of the usual average of 4 to 5 mm displacement a year, tectonic plates may experience 400 to 500 km motion in less than one hour. Earthquakes of higher than 9.5 magnitude will be generated along all plate boundaries. Momentum will make ocean and sea water surge inland in thousand feet high tsunamis. Low lands will be inundated. For instance, most of Texas, Florida, Bangladesh and Holland will drown. There will be hurricane force wind everywhere. People living near major fault lines and sea shores will perish. The initial death rate may be as high as 75% of the earth population. Survivors will be in great danger and will have to overcome starvation, injuries, and exposure dangers without any governmental help. There will be only remnants of government left.

## Two Suns/Moons Disinformation "News" Stories

This is a list of three propaganda "scientific news" items designed to make people believe that strange future events will be completely normal and nothing to fear. The 99% people should just stay in their neighborhood and keep doing their jobs while the "important" people scamper to their rat holes.

### A FOX NEWS "TWO SUNS" STORY

A January 2011 "scientific" report issued by News.com.au (owned by News Corp, which owns Fox News) predicted that a massive explosion will occur, tens of millions of times brighter than our sun, and suggested that the event was imminent. The story quoted a physics lecturer at the University of Southern Queensland, Brad Carter, who predicted that when Betelgeuse blows, ***night time will turn to day for several weeks on Earth.***

*"This is the final hurrah for the star," Dr Carter said "It goes bang, it explodes, it lights up - we'll have incredible brightness for a brief period of time for a couple of weeks and then over the coming months it begins to fade and then eventually it will be very hard to see at all."*

Many news agencies followed suit and said that *"Earth could be getting a second sun, at least temporarily"* For example, an article by Jay-ar Mendoza in " [www.allvoices.com/contributed-news/7969487-two-suns-could-be-visible-by-2012](http://www.allvoices.com/contributed-news/7969487-two-suns-could-be-visible-by-2012)" was even more bizarre: *".. He (Dr. Carter) also added that the supernova could be beneficial to Earth, its neutrino shower make things like gold, silver and all heavy elements even uranium. Don't worry this is far from being a sign of the apocalypse."*

Murdoch is telling us not to worry if we see two suns in the sky. It is only Beltegeuse going supernova.

Why is Fox News issuing this "two suns" red herring "news"? What does Murdoch know?

### EARTH HAS TWO 'MOONS' RIGHT NOW, THEORISTS SAY

This "news" item was everywhere. In Space.com, Natalie Wolchover wrote on December 23, 2011: *"Earth has two moons, one is that waxing and waning nightlight we all know and love. The other is a tiny asteroid, no bigger than a Smart Car, making huge doughnuts around Earth for a while before it zips off into the distance and is replaced by another. That's the scenario posited by scientists in a paper published Dec. 20 in the planetary science journal ICARUS. The researchers argue that there is a space rock at least 1 meter (3.3 feet) wide orbiting Earth at any given time, though it's not always the same rock."*

Why spread the supposedly scientific news that a tiny little space rock may or may not be temporarily orbiting Earth and that Earth has always had two moons?

### 200 BILLIONS 'NOMAD' PLANETS IN MILKY WAY

A February 24, 2012 San Francisco Chronicle **front page** article by David Perlman titled: **"Nomad" planets may outnumber stars in Milky Way** claims that *"There could be thousands, perhaps billions, of "nomad" planets floating through the galaxy with no star like our sun to anchor them.... The researchers reason that those nomad planets may once have been ejected from their original host stars, could be accompanied by flocks of moons and may contain their own ecosystems, they said.... Many of those homeless planets could be heated by internal radioactivity, and if any possess thick atmospheres, they might even harbor some kind of microbial life, according to the scientists' calculations."*

Strigari, Matteo Barnabé, Philip J. Marshall, and Roger D. Blandford (scientists from the Kavli Institute for Particle Astrophysics and Cosmology on the Stanford campus) went on to make this ridiculous claim: *"calculations indicate that at least 100,000 nomad planets could exist for every so-called main sequence star in our galaxy. And no one knows how many stars that could be - 200 billion at least, most astronomers would agree..... it's possible the planets have warm climates and thick atmospheres, meaning "obvious implications" for life, they say."*

The article concludes with: *"confirming nomad planets' existence will take at least a decade. NASA has proposed one new spacecraft that could help identify them. And work is already under way to develop a terrestrial telescope that could help in the search. The early stages of the Large Synoptic Survey Telescope project are being financed by Bill Gates and his former partner, the Hungarian Internet billionaire Charles Simonyi."*

What are billionaire Bill Gates and Charles Simonyi up to? They definitely want an early warning system.

## Opinion-Editorial Pages

### OPEN LETTER TO AWOL REPORTERS

You are a bunch of cowards. Democracy depends on you reporting the truth to tax paying voters. Once your complicity is no longer needed, you will be discarded but will be held accountable for your incompetence or duplicity. You failed in your duties to democracy, to your family, and to your neighbors. Shame on you.

### OPEN LETTER TO PILOTS, GEO-ENGINEERING SCIENTISTS AND OTHER CANON FODDER.

AS-S plane pilots: Thank you for your heroic and unsung work. Your hard work has probably saved half the population from already starving to death. Once the powerful and wealthy people who are using you are safe in their well stocked holes, you and your loved ones will be left to fend and die without any help.

The same goes for the idiot scientists at NASA, ESA, NOAA, and similar agencies. The extraordinary results you have achieved will be of no use to you and your loved ones. What is wrong with you? You are supposedly smart but are behaving like average American citizens.

### TREASON

Active participants in the sky fogging operations, you have only two choices. Whatever choice you select, you will be a traitor of one kind or another.

**First Choice:** You will either commit treason against your current earthly masters and other powerful selfish rats by speaking up and telling the truth, to at least your relative and friends.

or

**Second Choice:** You can uphold the oath of secrecy and will commit treason against your conscience, your soul, your family, your friends, and humanity.

If you choose treason against the rats who own your body, you will be sorry for a few days or a few years.

If you choose treason against your own conscience, you will regret your decision for eternity.

Eternity is a very long time. It is your decision. Make the right choice. You have free will, don't you?.

### OPEN LETTER TO ALL MAJOR COUNTRY HEAD OF STATES

The March 11 9.0 earthquake, Tsunami, and nuclear meltdown are a warning. Even though, you are a bunch of puny little impotent human beings, there are things you can do. Act responsibly. Power and privilege come with perks and **responsibility!** Protecting your own people is your top responsibility - or so you say.

Shut down all nuclear reactors, shut them down NOW! You owe that much to the incoming disaster survivors. They will be too busy surviving and will have no way of dealing with nuclear fallout. With the exception of Angela Merkel, no major country leader has the cojones to do the right thing.

The actions you have been taking (or not) will have a direct impact on survival rates. If you tell the truth soon and help build self-sustaining survival communities, more than a quarter of the world population will survive the incoming earth changes. If you continue on your current irresponsible course, you will be spiritually accountable and responsible for a large number of death and immeasurable and unnecessary human suffering. If you do not take the proper actions and tell the truth soon, you will inflict by omission 10 times more pain, misery, and death than Hitler and Stalin put together did. The incoming changes will be so terrifying that people need to psychologically strengthen themselves. The best ways to do that is to know what will happen and to prepare for it. Most of the survivors may go out of their mind, because of your failure to inform them. That omission alone is a crime against humanity.

People living far from fault lines and seashores must take steps now to ensure that they will not die of exposure and starvation. Good advice and preparations are needed. Well prepared people will have a better chance of surviving and creating thriving communities. Encouraging vegetable organic gardening (as Michelle Obama was tasked to do) is not enough. Real subsistence farming skills must be learned. Otherwise barely 10% instead of 25% of the current population will survive. If you do not act soon, hundreds of millions of survivors will end up in the same situation as the starving child in Kevin Carter Pulitzer Prize photograph. Food for vultures. As captains at the helm of a sinking ship, you must take quick, responsible, efficient, and hard decisions to minimize the loss of life. Instead, it appears as if you are taking advantage of your position to be the first to abandon ship before the passengers are aware of the danger.

I and about three quarters of the world population who live on or near coastlines or earthquake prone areas are doomed. That means that at least 1.5 billion people will initially survive the pole shift. How long and how many of these survivors will stay alive depends on your actions. The longer you wait, the more people will die. The clock is ticking. War World II Russian, American, and British head of states turned all of their country assets into a war machine. A similar course of action must be taken now. All intellectual, industrial, and human resources must be marshaled to build tens of thousands of self sustaining and self protected communities. Doing anything less is criminal negligence and dereliction of duties. Instead of doing that, you are bailing out blood-sucking bankers with voters tax money! Who are you working for? Who elected you?

Incompetent leaders: Stop slavishly following Robert Greene's Law of Power number 32. Stop acting like a bunch of paralyzed AS-S hole fillers and start doing your job. Any of you who will survive will be held accountable and dragged into court like a caged Egyptian tyrant. If you fail to lead and make the hard and correct decisions, history will curse you and will put you in a worst category than that of Caligula, Idi Amin Dada, and Khadafi.

### **OPEN LETTER TO THE 99%**

Knowledge is power.

As someone who has grown up in a third world country ruled by strong military men, I recognize that the whole world has turned into a form of sophisticated dictatorship. This dictatorship is created by withholding crucial knowledge from citizens.

In a healthy society, citizens hand over willfully their own power to a set of leaders for an appointed time. In exchange for such trust, the heads of states must bear a lot of responsibilities and put their citizen interests ahead of any agenda and keep them informed. That is the theory anyway. If the leaders do not use wisely the borrowed power (as it is almost always the case with ethically weak puny humans), their job contract is not renewed. Without the free or forced consent of the citizens, leaders are absolutely impotent.

The most efficient weapon dictators have in their arsenal is not torture, prison, or guns. It is lying and making sure that some truths cannot be known or allowed to be disseminated. This controlling technique is being used on a world-wide scale by all major countries. There are no employed news investigators who will dare report the truth about chemtrails and their true rationale. Even if they are, no major news organization will publish them. Those who report on the web are ridiculed, are called nuts, are accused of being "conspiracy theorists", or are just ignored.

Dictators acquire and hold on to power by not letting citizens have the right kind of knowledge. The moment people educate themselves, dictators will become impotent and pathetic just like the late Shah of Iran.

There is no current government leader that is truly concerned with the welfare of their countrymen. They just don't know how to lead, are afraid of taking the initiative, or are just looking for their own interest.

Do not blindly believe in anything I have written without verifying it. Be wary and be aware of what the major governments are not telling you but should be.

Find the truth about the ongoing changes that will greatly affect you. Seek knowledge and free yourself.



## Appendix

### THE FIVE STAGES OF GRIEF

The Kübler-Ross model, commonly known as the five stages of grief, was first introduced by Elisabeth Kübler-Ross in her 1969 book, *On Death and Dying*. The progression of states is:

- Denial
- Anger
- Bargaining
- Depression
- Acceptance

Kübler-Ross originally applied these stages to people suffering from terminal illness, later to any form of catastrophic personal loss (job, income, freedom, Earth civilization...).

### LAW 32 FROM "THE 48 LAWS OF POWER" BY ROBERT GREENE

#### **Play to People's Fantasies.**

The truth is often avoided because it is ugly and unpleasant. Never appeal to truth and reality unless you are prepared for the anger that comes for disenchantment. Life is so harsh and distressing that people who can manufacture romance or conjure up fantasy are like oases in the desert: everyone flockes to them.

### POLICY IMPLICATIONS OF GREENHOUSE WARMING

#### **Mitigation, Adaptation, and the Science Base**

Panel on Policy Implications of Greenhouse Warming  
Committee on Science, Engineering, and Public Policy  
National Academy of Sciences  
National Academy of Engineering  
Institute of Medicine

NATIONAL ACADEMY PRESS, Washington, D.C. 1992

National Academy Press • 2101 Constitution Ave., N.W. • Washington, D.C. 20418

The whole book web accessible: <http://books.nap.edu/openbook.php?isbn=0309043867>

NOTICE: The project that is the subject of this report was approved by the Governing Board of the National Research Council, whose members are drawn from the councils of the National Academy of Sciences, the National Academy of Engineering, and the Institute of Medicine. The members of the panel responsible for the report were chosen for their special competences and with regard for appropriate balance. This report is the result of work done by an independent panel appointed by the Committee on Science, Engineering, and Public Policy, which has authorized its release to the public.

#### **Book Description:**

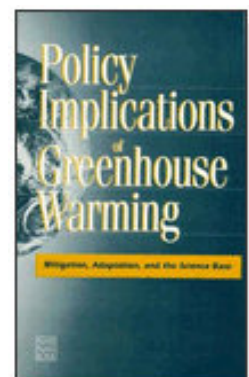
Global warming continues to gain importance on the international agenda and calls for action are heightening. Yet, there is still controversy over what must be done and what is needed to proceed.

Other Factors Affecting Policy Choices about Greenhouse Warming

Once policy options have been ranked, certain factors not directly related to greenhouse warming come into play in the decision-making process.

One such factor concerns risk perception. People differ in their willingness to take risks. We can expect people to differ in their reaction to the potential and uncertain threat of greenhouse warming as well. Some people may be distressed by the possibility that cherished parts of their cultural heritage or natural landscapes might be lost. Others might be unwilling to accept some aspects of proposed adjustments—perhaps abandoning their traditional homeland and moving elsewhere. In any case, people and organizations will differ in their judgments about how much society should pay to reduce the chance of uncertain climate change.

Another factor is the constraint of limited resources. The United States is a large, wealthy country. Many other nations are severely constrained in their ability to act because of limited financial and human resources.



## Appendix Q - Geo-engineering Options

This appendix is divided into four sections: (1) naval rifle system, (2)- balloon system, (3) multiple balloon system, (4) changing cloud abundance. Each section either describes the system or indicates how the costs were computed.

### **Naval Rifle System**

The current cost of a naval projectile weighing 1900 pounds (lb) is \$7000 to \$8000. The cost of propellant alone (if the shell is furnished) is \$900. It seems that a reasonable estimate for a 1-t shell, dust (commercial aluminum oxide can be obtained for \$0.25/lb), and a propellant for each shot is \$10,000...

### **Balloon System**

Consider a hydrogen balloon floating at 20 km, using the Archimedes principle and noting that the density of hydrogen-gas is one-fourteenth that of air:...

At \$0.10/m<sup>2</sup> (20 m<sup>2</sup> of wrapping plastic can be bought in the supermarket for about \$2), this is  $\$2 \times 10^{12}$ . Over 40 years, this amounts to  $\$80 \times 10^{12}$ . It offsets 10<sup>12</sup> t of carbon, so the cost is \$80/t C or  $\$80/40 = \$2/\text{t C/yr}$  or  $\$0.50/\text{t CO}_2/\text{yr}$ . A reasonable cost range of \$0.50 to \$5/t CO<sub>2</sub>/yr can be assumed.

### **Changing Cloud Abundance**

A study was undertaken to consider the various factors that would be required to increase the albedo effect of global cloud cover to balance the temperature increase that is projected to occur with a doubling of CO<sub>2</sub>.....

#### **The Climatic Effect of Clouds**

Earlier, Reck (1978) studied the effect of increases in cloud cover and, using a radiative-convective atmospheric model, found that a 4 to 5 percent increase in low-level cloud cover would be sufficient to offset the warming predicted from a doubling of preindustrial CO<sub>2</sub>.. ....

#### **How Cloud Condensation Nuclei Can Change Climate**

Despite the lack of knowledge about cloud processes, the possibility of altering clouds has been considered for a long time. ....Changes in cloudiness on a regional scale were also proposed some time ago by Russian scientist, who considered decreasing the cloudiness in the arctic region to promote ice melting.....

#### **Proposed Change in Low-Cloud Albedo Through Emissions of Cloud Condensation Nuclei**

In a recent paper, Albrecht (1989), following a hypothesis of Twomey and Wojciechowski (1969), grossly estimated the additional CCN that would be necessary to increase the fractional cloudiness or albedo of marine stratocumulus clouds by 4 percent. .... It is estimated that eight large power plants using spiked coal would be required (with 4 times the normal amount of sulfur) at a cost of \$2 to  $\$2.5 \times 10^6$  per plant. Most of the cost would be borne by those buying the power, so the cost might be at most 10 percent per year (the interest on the investment), or a total of \$2 billions per year.....

## **OCTOBER 15, 2009 WALL STREET JOURNAL ARTICLE BY STEPHANIE SIMON (EXCERPT)**

DENVER -- This should be the golden season across the West, when aspen paint hillsides in shades of fall.

**Dying Aspen** - But a mysterious ailment -- or perhaps a combination of factors -- is killing hundreds of thousands of acres of the trees from Nevada, New Mexico and Arizona through Utah, Colorado, Wyoming and into Canada, according to the U.S. government and independent scientists.....

State and local officials fear a drop-off in fall-foliage tourism, and residents complain about diminished views.....What is killing the aspen is unclear.....

## **MYSTERY CROP DAMAGE THREATENS HUNDREDS OF ACRES (EXCERPT)**

Shaun Chaiyabhat, 6:21 PM CDT, June 1, 2010 (Memphis 6/1/2010)

Small dots appear to "burn" through leaves

... Farmers afraid they may lose their entire crop

A mystery is unfolding across MidSouth farms. Something is killing crops, trees, even weeds and nobody can explain .....It's happening along a large swath of land near the Shelby and Tipton county border along Herring Hill Road and elsewhere near the Mississippi River bottoms. Tiny dots appear to have burned onto leaves of all types of plants,..... "It's apparently in everything." ..... It appears to have hit everything in its path.

There does not seem to be anything in common with the affected plants.

..... Farmers we spoke with are convinced something in the air caused this damage.....They're asking the USDA and other experts to look into the problem, and so are we. Copyright © 2010, WREG-TV

## **KY. FARMER CLAIMS SOME CORN POPPED ON THE STALK (EXCERPT)**

Tue Sep 7, 4:09 pm ET (from Yahoo News)

ELIZABETHTOWN, Ky. – A Hardin County farmer said that some ears among his feed corn rows popped on the stalk.....Hardin County Extension agent Doug Shepherd told The News Enterprise he's never seen popped kernels before.....Information from: The News-Enterprise, <http://www.thenewsenenterprise.com>

## **COOL THE EARTH WITH GEOENGINEERING? SOME SAY WAIT (EXCERPT)**

by Amy Standen, November 5, 2010 from KQED

At a recent meeting in Japan of the U.N. .... issued what some are calling a moratorium on all geoengineering activities until ..... there are .... regulations in place.

If you want to see what geoengineering might look like, go back to 1991, to the eruption of Mt. Pinatubo.... spewed almost 20 million tons of sulfur dioxide into the stratosphere. Those particles can reflect sunlight back into space..... Temperatures around the world dropped by an average of half a degree.

..... Scientists could use airplanes to inject sulfur dioxide directly into the stratosphere and bring down global temperatures... "It takes so little material to alter the whole planet's climate," ..... "The costs of doing it are just absurdly cheap." .....

**Unintended Consequences?**.....But in order to have a real impact on climate change, the project would have to take place on a massive scale. And that could have all sorts of unintended consequences. ....

**The Planetary Thermostat**....."Someone or some country.....could one day find itself capable of setting the temperature for the entire planet. So who, or where, would that be?".....

## **CHANGE BLINDNESS - RESEARCHERS PREDICT IT IN HUMANS USING COMPUTER INTELLIGENCE**

Posted On: June 17, 2010 - 7:10pm (Excerpt)

Rockville, MD — Scientists have just come several steps closer to understanding change blindness — the well studied failure of humans to detect seemingly obvious changes to scenes around them ....

These findings on change blindness were presented in a *Journal of Vision* article, "A semi-automated approach to balancing bottom-up salience for predicting change detection performance." .....During the study, participants were asked to spot the differences between pre-change and post-change versions of a series of pictures. Some of these pictures had elements added, removed or color altered..... The tests also showed that the addition or removal of an object from the scene is detected more readily than changes in the color of the object, a result that surprised the scientists. "We expected a color change to be a lot easier to spot, since color plays such an important role in our day-to-day lives and visual perception," said lead researcher Milan Verma of Queen Mary.....

Source: [Association for Research in Vision and Ophthalmology](http://www.associationforresearchinvisionandophthalmology.org)

## **IGNORANCE IS BLISS - A SCIENTIFIC PAPER**

Steven Shepherd and Aaron C. Kay published in November 2011 a scientific paper in the *Journal of Personality and Social Psychology* titled:

"On the Perpetuation of Ignorance: System Dependence, System Justification, and the Motivated Avoidance of Sociopolitical Information"

### **The paper abstract is:**

How do people cope when they feel uninformed or unable to understand important social issues, such as the environment, energy concerns, or the economy? Do they seek out information, or do they simply ignore the threatening issue at hand? One would intuitively expect that a lack of knowledge would motivate an increased, unbiased search for information, thereby facilitating participation and engagement in these issues—especially when they are consequential, pressing, and self-relevant. However, there appears to be a discrepancy between the importance/self-relevance of social issues and people's willingness to engage with and learn about them.

Leveraging the literature on system justification theory (Jost & Banaji, 1994), the authors hypothesized that, rather than motivating an increased search for information, a lack of knowledge about a specific sociopolitical issue will

- (a) foster feelings of dependence on the government, which will
- (b) increase system justification and government trust, which will

(c) increase desires to avoid learning about the relevant issue when information is negative or when information valence is unknown.

In other words, the authors suggest that ignorance—as a function of the system justifying tendencies it may activate—may, ironically, breed more ignorance. In the contexts of energy, environmental, and economic issues, the authors present 5 studies that

- (a) provide evidence for this specific psychological chain (i.e., ignorance about an issue → dependence → government trust → avoidance of information about that issue);
- (b) shed light on the role of threat and motivation in driving the second and third links in this chain; and
- (c) illustrate the unfortunate consequences of this process for individual action in those contexts that may need it most.

### **ALARMING' AMAZON DROUGHTS MAY HAVE GLOBAL FALLOUT (EXCERPT)**

by Christopher Joyce, February 7, 2011

The world's largest tropical forest, the Amazon, experienced something rare last year — a drought....

It was the second such drought in the Amazon in five years, and forest scientists are trying to understand why these droughts are happening, and what their effects will be for the planet.

The 2005 drought in the Amazon was so unusual that scientists called it a "100-year event" — something supposed to happen only once a century.

"This is what's quite alarming — that we've seen these two very unusual events," .....

### **ARCTIC IS A HOTTER, DARKER PLACE SINCE 2006, MELTING AND ABSORBING HEAT MORE (EXCERPT)**

Associated Press, Published: December 1, 2011

WASHINGTON — Federal officials say the Arctic region has changed dramatically in the past five years..

....The report, written by 121 scientists from around the world, said statistics point to a shift in the Arctic health in 2006. .... This summer's sea ice melt was the second worst on record, a tad behind 2007.

"We've got a new normal," said co-author Don Perovich, a geophysicist at the Army Corps of Engineers Cold Research and Engineering Lab. "Whether it's a tipping point and we'll never recover, who's to say?"

The report highlighted statistics to show an Arctic undergoing change:

—A NASA satellite found that 430 billion metric tons of ice melted in Greenland from 2010 to 2011, and the melting is accelerating. Since 2000, Greenland's 39 widest glaciers shrunk by nearly 530 square miles, about the equivalent of 22 Manhattans.....What's even more troubling to scientists is that there's been a record darkening of the normally white Arctic land and sea. White snow and ice reflects solar energy, but a melting darker Arctic in the summer absorbs that heat.

Marco Tedesco of the City College of New York, a co-author, said the darkening is like a speeding train going downhill, adding to the acceleration of warming.

Richter-Menge said the darkening of the Arctic from melting ice and snow "causes more heating, which causes more melting, and on the cycle goes.".....

### **H.R.2977 -- SPACE PRESERVATION ACT OF 2001 (INTRODUCED IN HOUSE - IH)**

(<http://thomas.loc.gov/cgi-bin/query/z?c107:H.R.2977.IH>)

107th CONGRESS - 1st Session - H. R. 2977

To preserve the cooperative, peaceful uses of space for the benefit of all humankind by permanently prohibiting the basing of weapons in space by the United States, and to require the President to take action to adopt and implement a world treaty banning space-based weapons.

IN THE HOUSE OF REPRESENTATIVES

October 2, 2001

Mr. KUCINICH introduced the following bill; which was referred to the Committee on Science, and in addition to the Committees on Armed Services, and International Relations, for a period to be subsequently determined by the Speaker, in each case for consideration of such provisions as fall within the jurisdiction of the committee concerned



## A BILL

To preserve the cooperative, peaceful uses of space for the benefit of all humankind by permanently prohibiting the basing of weapons in space by the United States, and to require the President to take action to adopt and implement a world treaty banning space-based weapons.

*Be it enacted by the Senate and House of Representatives of the United States of America in Congress assembled,*

### **SECTION 1. SHORT TITLE.**

This Act may be cited as the 'Space Preservation Act of 2001'.

### **SEC. 2. REAFFIRMATION OF POLICY ON THE PRESERVATION OF PEACE IN SPACE.**

Congress reaffirms the policy expressed in section 102(a) of the National Aeronautics and Space Act of 1958 (42 U.S.C. 2451(a)), stating that it 'is the policy of the United States that activities in space should be devoted to peaceful purposes for the benefit of all mankind.'

### **SEC. 3. PERMANENT BAN ON BASING OF WEAPONS IN SPACE.**

The President shall--

- (1) implement a permanent ban on space-based weapons of the United States and remove from space any existing space-based weapons of the United States; and
- (2) immediately order the permanent termination of research and development, testing, manufacturing, production, and deployment of all space-based weapons of the United States and their components.

### **SEC. 4. WORLD AGREEMENT BANNING SPACE-BASED WEAPONS.**

The President shall direct the United States representatives to the United Nations and other international organizations to immediately work toward negotiating, adopting, and implementing a world agreement banning space-based weapons.

### **SEC. 5. REPORT.**

The President shall submit to Congress not later than 90 days after the date of the enactment of this Act, and every 90 days thereafter, a report on--

- (1) the implementation of the permanent ban on space-based weapons required by section 3; and
- (2) progress toward negotiating, adopting, and implementing the agreement described in section 4.

### **SEC. 6. NON SPACE-BASED WEAPONS ACTIVITIES.**

Nothing in this Act may be construed as prohibiting the use of funds for--

- (1) space exploration;
- (2) space research and development;
- (3) testing, manufacturing, or production that is not related to space-based weapons or systems; or
- (4) civil, commercial, or defense activities (including communications, navigation, surveillance, reconnaissance, early warning, or remote sensing) that are not related to space-based weapons or systems.

### **SEC. 7. DEFINITIONS.**

In this Act:

- (1) The term 'space' means all space extending upward from an altitude greater than 60 kilometers above the surface of the earth and any celestial body in such space.
- (2)(A) The terms 'weapon' and 'weapons system' mean a device capable of any of the following:
  - (i) Damaging or destroying an object (whether in outer space, in the atmosphere, or on earth) by--
    - (I) firing one or more projectiles to collide with that object;
    - (II) detonating one or more explosive devices in close proximity to that object;
    - (III) directing a source of energy (including molecular or atomic energy, subatomic particle beams, electromagnetic radiation, plasma, or extremely low frequency (ELF) or ultra low frequency (ULF) energy radiation) against that object; or
    - (IV) any other unacknowledged or as yet undeveloped means.

(ii) Inflicting death or injury on, or damaging or destroying, a person (or the biological life, bodily health, mental health, or physical and economic well-being of a person)--

(I) through the use of any of the means described in clause (i) or subparagraph (B);

(II) through the use of land-based, sea-based, or space-based systems using radiation, electromagnetic, psychotronic, sonic, laser, or other energies directed at individual persons or targeted populations for the purpose of information war, mood management, or mind control of such persons or populations; or

(III) by expelling chemical or biological agents in the vicinity of a person.

(B) Such terms include exotic weapons systems such as--

(i) electronic, psychotronic, or information weapons;

(ii) chemtrails;

(iii) high altitude ultra low frequency weapons systems;

(iv) plasma, electromagnetic, sonic, or ultrasonic weapons;

(v) laser weapons systems;

(vi) strategic, theater, tactical, or extraterrestrial weapons; and

(vii) chemical, biological, environmental, climate, or tectonic weapons.

(C) The term 'exotic weapons systems' includes weapons designed to damage space or natural ecosystems (such as the ionosphere and upper atmosphere) or climate, weather, and tectonic systems with the purpose of inducing damage or destruction upon a target population or region on earth or in space.

## **A NASA PROPAGANDA CAMPAIGN AGAINST CHILDREN - PART 1**

This article is at: [http://www.nasa.gov/centers/langley/news/researchernews/rn\\_contrails.html](http://www.nasa.gov/centers/langley/news/researchernews/rn_contrails.html)

### ***NASA and GLOBE: Observing the Sky for Science - 10.12.05***

NASA and GLOBE, an international student Earth science program, invite the public to join in a scientific experiment on Oct. 13. It's simple: observe the sky over your area and report on the presence or absence of contrails



Image Left: The Contrail Education program at NASA Langley Research Center works to educate students around the world about atmospheric science research and teach fundamental science concepts. The program is led by Lin Chambers of the Science Directorate, in collaboration with other NASA scientists and professionals, as well as with the National Science Foundation and the GLOBE program.

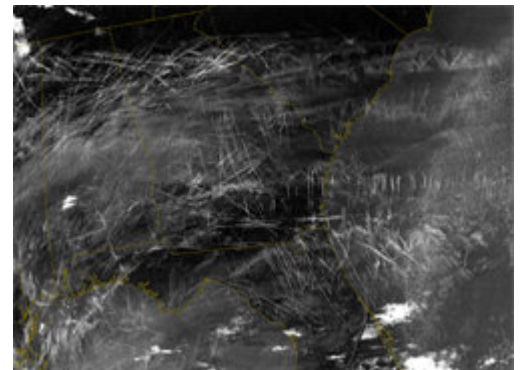
Teachers, students and anyone interested in helping to develop a better understanding of the Earth are welcome to participate in the second annual Fall Contrail Count-a-Thon by submitting contrail observations through an Internet Data Entry Form. Designed to give students and adults an opportunity to collaborate with scientists in a hands-on, real-world science experiment, the Count-a-Thon will also teach participants about contrails, a unique feature of our atmosphere.

Contrails are cirrus clouds formed when water vapor condenses and freezes around small particles (aerosols) in aircraft exhaust. Some of the water vapor comes from the surrounding air; some from the aircraft exhaust itself. Contrails, especially thin ones, are very hard to see from satellites and may have an impact on Earth's atmosphere.

"To augment what we can see from satellite, we hope to receive visual observation reports from lots of people all over the world. Both reports of contrails and reports with no contrails are equally valuable for this research," said Lin Chambers, director of the GLOBE contrail education project at Langley Research Center.

Contrails increase Earth's cloudiness while impacting the atmosphere and climate. Observations in the U.S. and around the globe may help scientists better understand the atmospheric conditions that enable the formation of contrails.

Image Right: This image, from January 29, 2004, shows contrails over the southeastern US as seen by the Terra spacecraft. Image



courtesy of Louis Nguyen.

Similar to last year's event, the 2005 Fall Contrail Count-a-Thon will be held during Earth Science Week, Oct. 9-15. Earth Science Week, sponsored by the American Geological Institute, Alexandria, Va., is an international event to help the public gain a better understanding and appreciation for Earth sciences and to encourage stewardship of our planet.

"We thought spotting contrails would be a fun and educational activity that could include more schools and the general public since no instruments are required," said Peggy LeMone, chief scientist for the GLOBE program. The program is based at the University Corporation for Atmospheric Research, Boulder, Colo. "The distribution of sightings tells us about where jets are flying and where weather conditions favor contrails forming. We can also compare the contrail patterns with satellite images," she said.

GLOBE is managed as a partnership between University Corporation for Atmospheric Research and Colorado State University, Fort Collins, through a cooperative agreement with NASA and sponsorship by the National Science Foundation and the U.S. Department of State.

GLOBE brings students, teachers, and scientists together to support achievements in science, technology, engineering and mathematics. It also helps gather important data for the global Earth science community. As of September 2005, students reported more than 13 million scientific measurements using methods and standards developed by GLOBE scientists.

NASA's Science Mission Directorate also provides funding for the Count-a-Thon. The directorate is dedicated to understanding the Earth as an integrated system. Through the study of Earth, NASA is helping provide sound science to better life here, while developing the technologies needed to explore the universe and search for life beyond our solar system.

By Chris Rink and Katherine Lorentz

The Researcher News. NASA Langley Research Center

Managing Editor and Responsible NASA Official: H. Keith Henry. Editor and Curator: Patrick Lorentz

## **A NASA PROPAGANDA CAMPAIGN AGAINST CHILDREN - PART 2**

The full article is at: <https://myasadata.larc.nasa.gov/P4.html>

### **Science Project: Contrail Studies**

**Purpose:** Serious students, citizen scientists and regular weather watchers can use a camera and simple weather instruments to monitor and study contrails and to determine their possible environmental effects.

**Age Range:** 11 to adult

**Time Required:** Contrails can be observed, photographed and reported in only a few minutes a day. Scientific studies of contrails take more time and can provide important scientific information.

**Background:**

Contrails can spread into cirrus clouds that reduce sunlight during the day, thus causing a cooling effect. But contrails also trap heat during both the day and the night. It is not yet certain if the net result of these effects warms or cools the Earth, but most studies indicate that contrails have a net warming effect on our planet.



Image courtesy Forrest M. Mims III

Scientists at NASA's Langley Research Center in Hampton, Virginia found that the increase in temperature over the United States from 1975 to 1994 closely matched the increase expected from the presence of contrails.

An unprecedented opportunity to study the effect of contrails occurred during the 3 days following the terrorist attacks in New York and Washington on 11 September 2001. David Travis of the University of Wisconsin, Whitewater, found that during the virtual absence of contrails the difference in the high and low temperatures each day increased 1.1 degrees Celsius (2 degrees Fahrenheit) on each day.

The significance of all this is not fully established--which is where you come in. Observations and

measurements of cirrus clouds by students, citizen scientists and weather observers might lead to new insights and discoveries that will be of serious interest to the professional scientists who study the impact of contrails on weather and climate.

## A NASA EMPLOYEE: WILLING PROPAGANDIST OR CLUELESS FOOL?

([http://www.nasa.gov/audience/foreducators/k-4/features/F\\_Lin\\_Chambers.html](http://www.nasa.gov/audience/foreducators/k-4/features/F_Lin_Chambers.html)) - 03.11.04

### Lin Chambers

Physical Scientist, Climate and Radiation Studies

Director, CERES S'COOL Project

*"Although I was trained as an engineer, I now work as an atmospheric scientist at NASA's Langley Research Center who spends a great deal of time on education and outreach. I guess that proves that what you study in college does not set the rest of your life in stone.*

*My main job is as a member of the CERES science team. CERES, which stands for "Clouds and the Earth's Radiant Energy System," is an instrument onboard NASA satellites. It's used to study the effects clouds have on the Earth's climate. I work mainly in the area of understanding and interpreting the instrument's measurements. This is a very interesting and challenging problem because satellites are looking down at the variable surface of the Earth and don't always identify clouds accurately.*

*This project is what led me into the education area. In order to get some additional information for our instrument, and to reach out and inform the public about what we are doing, I developed the S'COOL project. S'COOL, which stands for "Students' Cloud Observations On-Line," involves K-12 students in observing and reporting on clouds from the ground while our instruments are observing them from above. Because students are observing clouds against the uniform blue background of the sky, their observations provide a useful complement to what we see from space."*

Written by Lin Chambers

Edited by Dan Stillman, Institute for Global Environmental Strategies

## 49 FORMER NASA SCIENTISTS SEND A LETTER DISPUTING CLIMATE CHANGE

This letter has been cited in many publications such as:

<http://www.businessinsider.com/nasa-scientists-dispute-climate-change-2012-4#ixzz1rk9kxYqt>

<http://thegwpf.org/science-news/5422-climate-rebellion-rocks-nasa.html>

<http://www.nationalreview.com/planet-gore/295798/49-nasa-scientists-vs-global-warming-greg-pollowitz>

<http://sppiblog.org/news/former-nasa-scientists-astronauts-admonish-agency-on-climate-change-position>

FOR IMMEDIATE RELEASE

Contact: Blanquita Cullum 703-307-9510 bqview at mac.com

Joint letter to NASA Administrator blasts agency's policy of ignoring empirical evidence

HOUSTON, TX – April 10, 2012.

49 former NASA scientists and astronauts sent a letter to NASA Administrator Charles Bolden last week admonishing the agency for its role in advocating a high degree of certainty that man-made CO<sub>2</sub> is a major cause of climate change while neglecting empirical evidence that calls the theory into question.

The group, which includes seven Apollo astronauts and two former directors of NASA's Johnson Space Center in Houston, are dismayed over the failure of NASA, and specifically the Goddard Institute For Space Studies (GISS), to make an objective assessment of all available scientific data on climate change. They charge that NASA is relying too heavily on complex climate models that have proven scientifically inadequate in predicting climate only one or two decades in advance.

H. Leighton Steward, chairman of the non-profit Plants Need CO<sub>2</sub>, noted that many of the former NASA scientists harbored doubts about the significance of the CO<sub>2</sub>-climate change theory and have concerns over NASA's advocacy on the issue. While making presentations in late 2011 to many of the signatories of the letter, Steward realized that the NASA scientists should make their concerns known to NASA and the GISS.

"These American heroes – the astronauts that took to space and the scientists and engineers that put them there – are simply stating their concern over NASA's extreme advocacy for an unproven theory," said Leighton Steward. "There's a concern that if it turns out that CO<sub>2</sub> is not a major cause of climate change, NASA will



have put the reputation of NASA, NASA's current and former employees, and even the very reputation of science itself at risk of public ridicule and distrust."

Select excerpts from the letter:

"The unbridled advocacy of CO2 being the major cause of climate change is unbecoming of NASA's history of making an objective assessment of all available scientific data prior to making decisions or public statements."

"We believe the claims by NASA and GISS, that man-made carbon dioxide is having a catastrophic impact on global climate change are not substantiated."

"We request that NASA refrain from including unproven and unsupported remarks in its future releases and websites on this subject."

The full text of the letter:

March 28, 2012

The Honorable Charles Bolden, Jr.

NASA Administrator

NASA Headquarters

Washington, D.C. 20546-0001

Dear Charlie,

We, the undersigned, respectfully request that NASA and the Goddard Institute for Space Studies (GISS) refrain from including unproven remarks in public releases and websites. We believe the claims by NASA and GISS, that man-made carbon dioxide is having a catastrophic impact on global climate change are not substantiated, especially when considering thousands of years of empirical data. With hundreds of well-known climate scientists and tens of thousands of other scientists publicly declaring their disbelief in the catastrophic forecasts, coming particularly from the GISS leadership, it is clear that the science is NOT settled. The unbridled advocacy of CO2 being the major cause of climate change is unbecoming of NASA's history of making an objective assessment of all available scientific data prior to making decisions or public statements. As former NASA employees, we feel that NASA's advocacy of an extreme position, prior to a thorough study of the possible overwhelming impact of natural climate drivers is inappropriate. We request that NASA refrain from including unproven and unsupported remarks in its future releases and websites on this subject. At risk is damage to the exemplary reputation of NASA, NASA's current or former scientists and employees, and even the reputation of science itself.

For additional information regarding the science behind our concern, we recommend that you contact Harrison Schmitt or Walter Cunningham, or others they can recommend to you.

Thank you for considering this request.

Sincerely,

(Attached signatures)

CC: Mr. John Grunsfeld, Associate Administrator for Science

CC: Ass Mr. Chris Scolese, Director, Goddard Space Flight Center

Ref: Letter to NASA Administrator Charles Bolden, dated 3-26-12, regarding a request for NASA to refrain from making unsubstantiated claims that human produced CO2 is having a catastrophic impact on climate change.

Jack Barneburg, Jack – JSC, Space Shuttle Structures, Engineering Directorate, 34 years

Larry Bell – JSC, Mgr. Crew Systems Div., Engineering Directorate, 32 years

Dr. Donald Bogard – JSC, Principal Investigator, Science Directorate, 41 years

Jerry C. Bostick – JSC, Principal Investigator, Science Directorate, 23 years

Dr. Phillip K. Chapman – JSC, Scientist – astronaut, 5 years

Michael F. Collins, JSC, Chief, Flight Design and Dynamics Division, MOD, 41 years

Dr. Kenneth Cox – JSC, Chief Flight Dynamics Div., Engr. Directorate, 40 years

Walter Cunningham – JSC, Astronaut, Apollo 7, 8 years

Dr. Donald M. Curry – JSC, Mgr. Shuttle Leading Edge, Thermal Protection Sys., Engr. Dir., 44 years

Leroy Day – Hdq. Deputy Director, Space Shuttle Program, 19 years

Dr. Henry P. Decell, Jr. – JSC, Chief, Theory & Analysis Office, 5 years  
Charles F. Deiterich – JSC, Mgr., Flight Operations Integration, MOD, 30 years  
Dr. Harold Doiron – JSC, Chairman, Shuttle Pogo Prevention Panel, 16 years  
Charles Duke – JSC, Astronaut, Apollo 16, 10 years  
Anita Gale  
Grace Germany – JSC, Program Analyst, 35 years  
Ed Gibson – JSC, Astronaut Skylab 4, 14 years  
Richard Gordon – JSC, Astronaut, Gemini Xi, Apollo 12, 9 years  
Gerald C. Griffin – JSC, Apollo Flight Director, and Director of Johnson Space Center, 22 years  
Thomas M. Grubbs – JSC, Chief, Aircraft Maintenance and Engineering Branch, 31 years  
Thomas J. Harmon  
David W. Heath – JSC, Reentry Specialist, MOD, 30 years  
Miguel A. Hernandez, Jr. – JSC, Flight crew training and operations, 3 years  
James R. Roundtree – JSC Branch Chief, 26 years  
Enoch Jones – JSC, Mgr. SE&I, Shuttle Program Office, 26 years  
Dr. Joseph Kerwin – JSC, Astronaut, Skylab 2, Director of Space and Life Sciences, 22 years  
Jack Knight – JSC, Chief, Advanced Operations and Development Division, MOD, 40 years  
Dr. Christopher C. Kraft – JSC, Apollo Flight Director and Director of Johnson Space Center, 24 years  
Paul C. Kramer – JSC, Ass't for Planning Aeroscience and Flight Mechanics Div., Egr. Dir., 34 years  
Alex (Skip) Larsen  
Dr. Lubert Leger – JSC, Ass't. Chief Materials Division, Engr. Directorate, 30 years  
Dr. Humbolt C. Mandell – JSC, Mgr. Shuttle Program Control and Advance Programs, 40 years  
Donald K. McCutchen – JSC, Project Engineer – Space Shuttle and ISS Program Offices, 33 years  
Thomas L. (Tom) Moser – Hdq. Dep. Assoc. Admin. & Director, Space Station Program, 28 years  
Dr. George Mueller – Hdq., Assoc. Adm., Office of Space Flight, 6 years  
Tom Ohesorge  
James Peacock – JSC, Apollo and Shuttle Program Office, 21 years  
Richard McFarland – JSC, Mgr. Motion Simulators, 28 years  
Joseph E. Rogers – JSC, Chief, Structures and Dynamics Branch, Engr. Directorate, 40 years  
Bernard J. Rosenbaum – JSC, Chief Engineer, Propulsion and Power Division, Engr. Dir., 48 years  
Dr. Harrison (Jack) Schmitt – JSC, Astronaut Apollo 17, 10 years  
Gerard C. Shows – JSC, Asst. Manager, Quality Assurance, 30 years  
Kenneth Suit – JSC, Ass't Mgr., Systems Integration, Space Shuttle, 37 years  
Robert F. Thompson – JSC, Program Manager, Space Shuttle, 44 years/s/ Frank Van Renesselaer – Hdq., Mgr. Shuttle Solid Rocket Boosters, 15 years  
Dr. James Visentine – JSC Materials Branch, Engineering Directorate, 30 years  
Manfred (Dutch) von Ehrenfried – JSC, Flight Controller; Mercury, Gemini & Apollo, MOD, 10 years  
George Weisskopf – JSC, Avionics Systems Division, Engineering Dir., 40 years  
Al Worden – JSC, Astronaut, Apollo 15, 9 years  
Thomas (Tom) Wismuller – JSC, Meteorologist, 5 years